

# 11th Annual Conference on the Science of Dissemination and Implementation in Health

Co-Hosted by the National Institutes  
of Health and AcademyHealth

## Harnessing Policy Capacity to Pragmatically Implement Hybrid Trial Findings in US Trauma Care Systems

Douglas Zatzick, MD Professor Department of Psychiatry, Harborview  
Level I Trauma Center, University of Washington School of Medicine

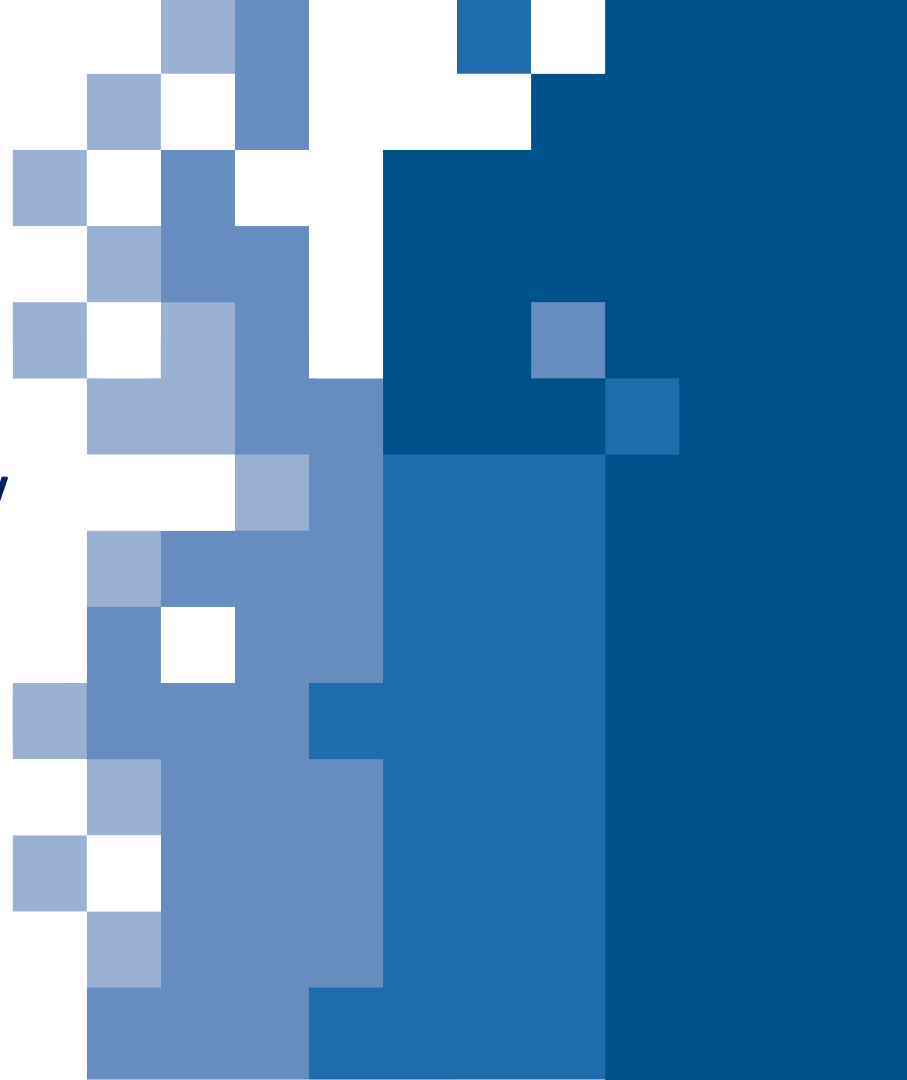
Supported by NIH Healthcare System Collaboratory Common Fund  
UH3 MH106338/U54AT007748 & PCORI Contract IHS-2017C1-6151



AcademyHealth



National Institutes of Health





# US Trauma Care Systems: Under Resourced Care Settings with Marked Patient, Provider, & Site Level Heterogeneity



- Often “safety net” hospitals and health care systems
- Patients with multiple comorbidities & risk behaviors
  - PTSD, depression, & suicidal ideation
  - Alcohol & drug use disorders
  - Patients require opiate analgesics post-injury
- Care transition back to primary care & community: “Sailing Off a Flat Earth”



11th Annual  
Conference on the Science of Dissemination  
and Implementation in Health

# Trauma Care Systems & Implementation Science: “Make It Happen” Research to Regulatory Policy (Greenhalgh et al 2004)

*Innovation in Service Organizations*

593

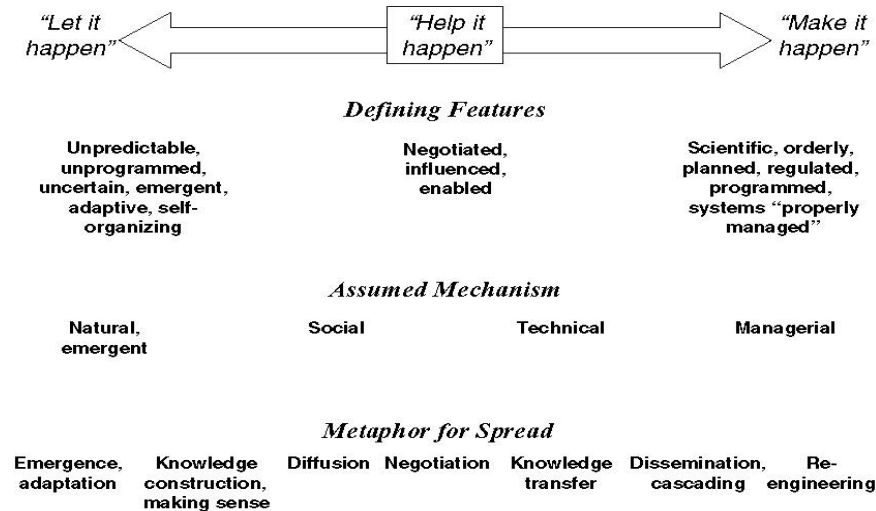


FIGURE 2. Different Conceptual and Theoretical Bases for the Spread of Innovation in Service Organizations

# American College of Surgeons Committee on Trauma “Make it Happen” Regulatory Policy

- Literature reviewed and expert opinion obtained
- Requirements developed
- Verification site visits by College ensure requirements are implemented
- Resource guide updated regularly

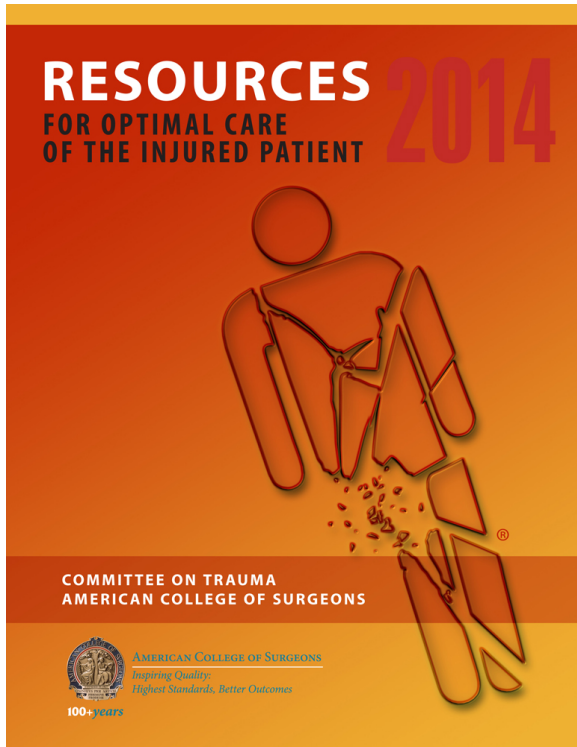
11th Annual  
Conference on the Science of Dissemination  
and Implementation in Health

# A Decade of Effectiveness-Implementation Hybrid Pragmatic Trials Targeting Acute Care Policy



11th Annual  
Conference on the Science of Dissemination  
and Implementation in Health





## PTSD & Comorbidity Guideline

“The incorporation of routine trauma center–based screening and intervention for PTSD and depression is an area that could benefit from the ongoing integration of emerging data and evolving expert opinion.”

## Three Potential Policy Next Steps

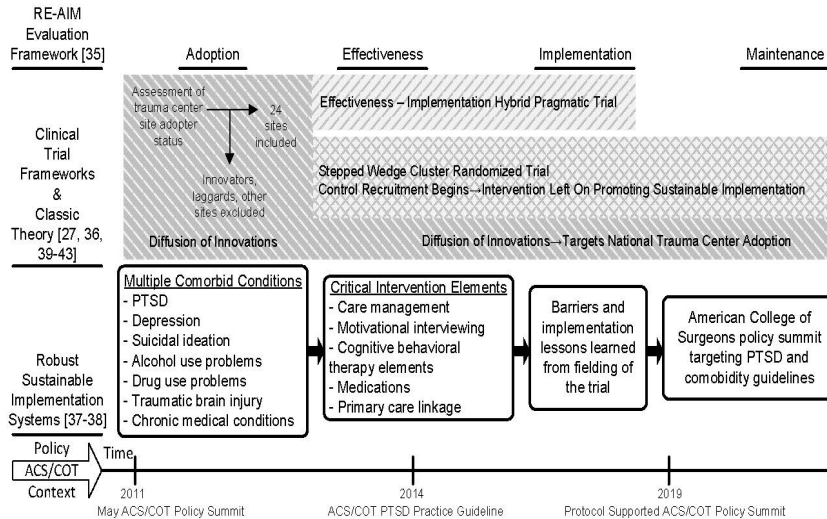
- 1) Advance guideline to a requirement
- 2) Do nothing (maintain guideline)
- 3) De-implement guideline

**11th Annual  
Conference on the Science of Dissemination  
and Implementation in Health**



# A 25 Site Hybrid Trial Targeting Acute Care PTSD Policy: Integrating Implementation Science & Pragmatic Trial Methods

## Trauma Survivors Outcomes & Support (TSOS) Zatzick et al., Implementation Science 2016

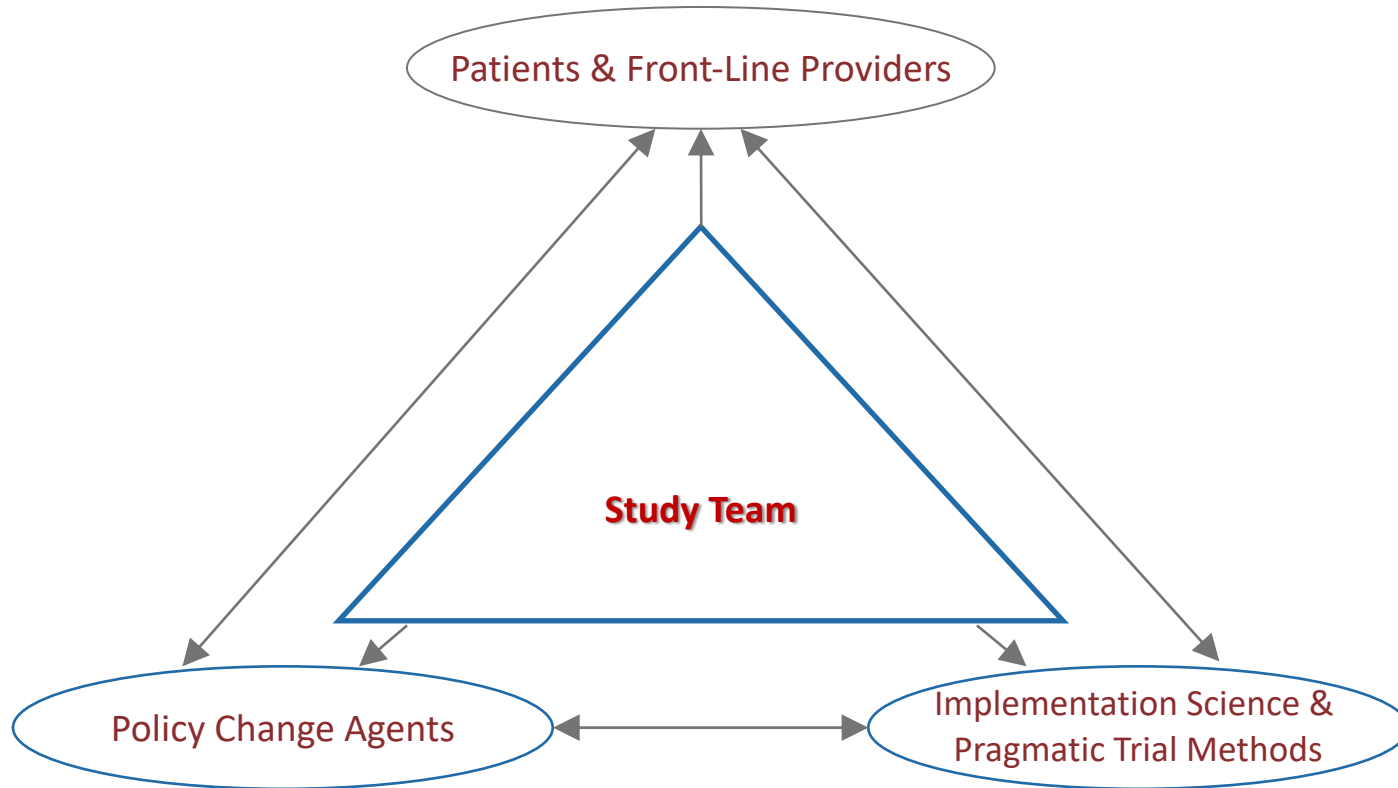


## Hybrid Methods

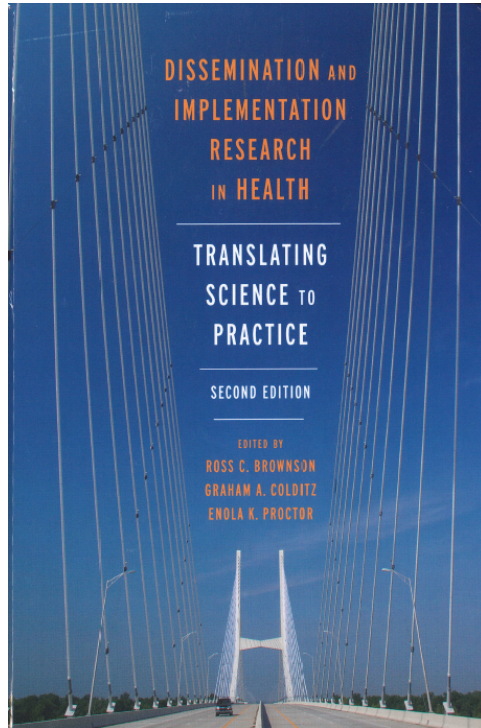
- Pragmatic attention to research efficiency
- Rapid Assessment Procedure Informed Clinical Ethnography (RAPICE-Palinkas & Zatzick, In Press) as a pragmatic mixed method for real-time understanding of clinical trial and policy interplay
- Multiple, iterative investigations of health care system technology innovations grounded in clinical epidemiology
- Pragmatic assessments of patient, provider & site level adherence/fidelity
- PTSD & co-morbidity meta-analyses extend beyond treatment effects to incorporate population impact estimates



# Embedded Implementation Teams Within Embedded Health Care System Hybrid Pragmatic Trials



# Health Care System Hybrid Studies Harnessing Policy Capacity as an Opportunity to Integrate D & I Research and D & I Practice



11th Annual  
Conference on the Science of Dissemination  
and Implementation in Health

FOREWORD xi

## Avoiding Silos Between D&I Research and D&I Practice

As the research community has embraced studies of D&I as a valid form of scientific activity, we have become aware that we may be creating a wedge between those advancing the science with those who work as D&I practitioners. The premise of D&I research was to break down the silos between research and practice, and the next generation of work in this area would be well served not to recreate a new set of barriers in the service of acceptability to biomedical research. We have also seen this to some degree in the ongoing dis-

the scientific products from discovery to delivery to see what bang for the buck D&I research generates.

If we are successful in moving these areas forward, I anticipate the fruits of our collective labors will be captured in subsequent editions of this book. The future is bright . . .

David Chambers, DPhil  
Deputy Director for Implementation Science  
Division of Cancer Control and Population Sciences  
National Cancer Institute  
National Institutes of Health

