

# Dissemination and implementation strategies for embedding pragmatic clinical trials in learning health systems

**Leah Tuzzio, MPH**

**Eric B. Larson, MD, MPH**

**James Fraser**

**Kaiser Permanente Washington  
Health Research Institute**

This work is supported by the National Institutes of Health (NIH) Common Fund, through cooperative agreement U24AT009676 from the Office of Strategic Coordination within the Office of the NIH Director. The views presented here are solely the responsibility of the authors and do not necessarily represent the official views of the National Institutes of Health.



# The NIH Collaboratory Story



Launched through the National Institutes of Health (NIH) Common Fund in 2012.



**Goal:** Strengthen the national capacity to implement cost-effective large-scale research studies that engage health care delivery organizations as research partners



**Vision:** Support the design and execution of innovative pragmatic clinical trial Demonstration Projects to establish best practices and proof of concept



**15** multi-site pragmatic clinical trials embedded in hospitals, community health centers, integrated delivery systems, nursing homes, and acute and specialty facilities

# Tools and resources

<http://rethinkingclinicaltrials.org/>



## Living Textbook

Comprehensive, searchable information on design, conduct, & dissemination of embedded PCTs



## Knowledge Repository

Archives for the Living Textbook, videos, stakeholder interviews, guidance documents, & more



## Monthly Newsletter

A convenient wrap up of NIH Collaboratory news, featured stories, and events—with links to recent and upcoming Grand Rounds webinars

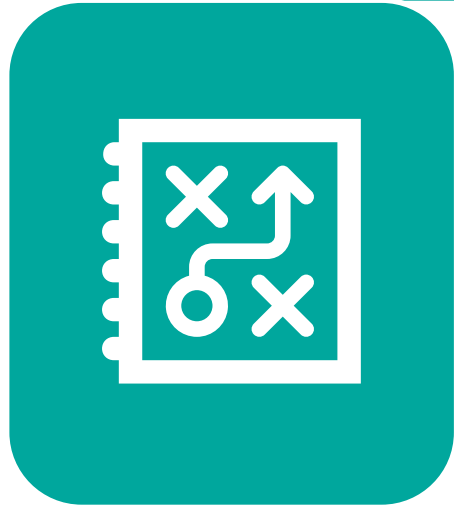
# What key strategies promote implementation within LHSs?

Summer 2016: Interviews with project leaders from **9** NIH Collaboratory pragmatic clinical trials

“How did you design and roll out your trials in ways that would lead to successful implementation of the results, if the desired outcomes were achieved?”

## 5 building blocks

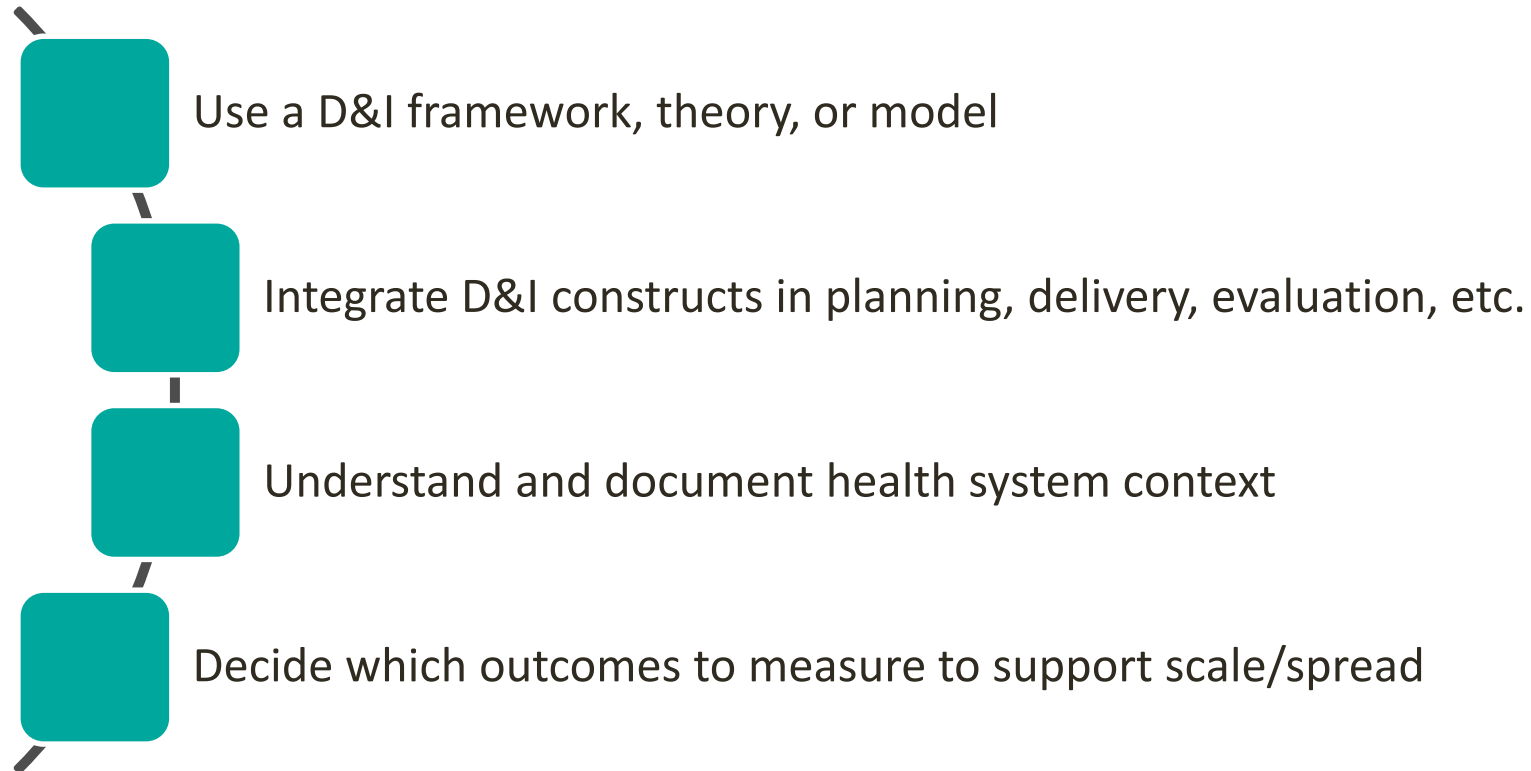
- Plan for dissemination & implementation
- Build (or strengthen) relationships & nurture trusting partnerships
- Collaborate & co-design
- Pilot test, evaluate, & continuously improve
- Build sustainable infrastructure & resources



# Plan for dissemination & implementation



# Plan for dissemination and implementation



*“In addition to studying health outcomes, it is especially important in pragmatic trials to also study implementation outcomes since acceptability, feasibility and appropriateness predict adoption.”*

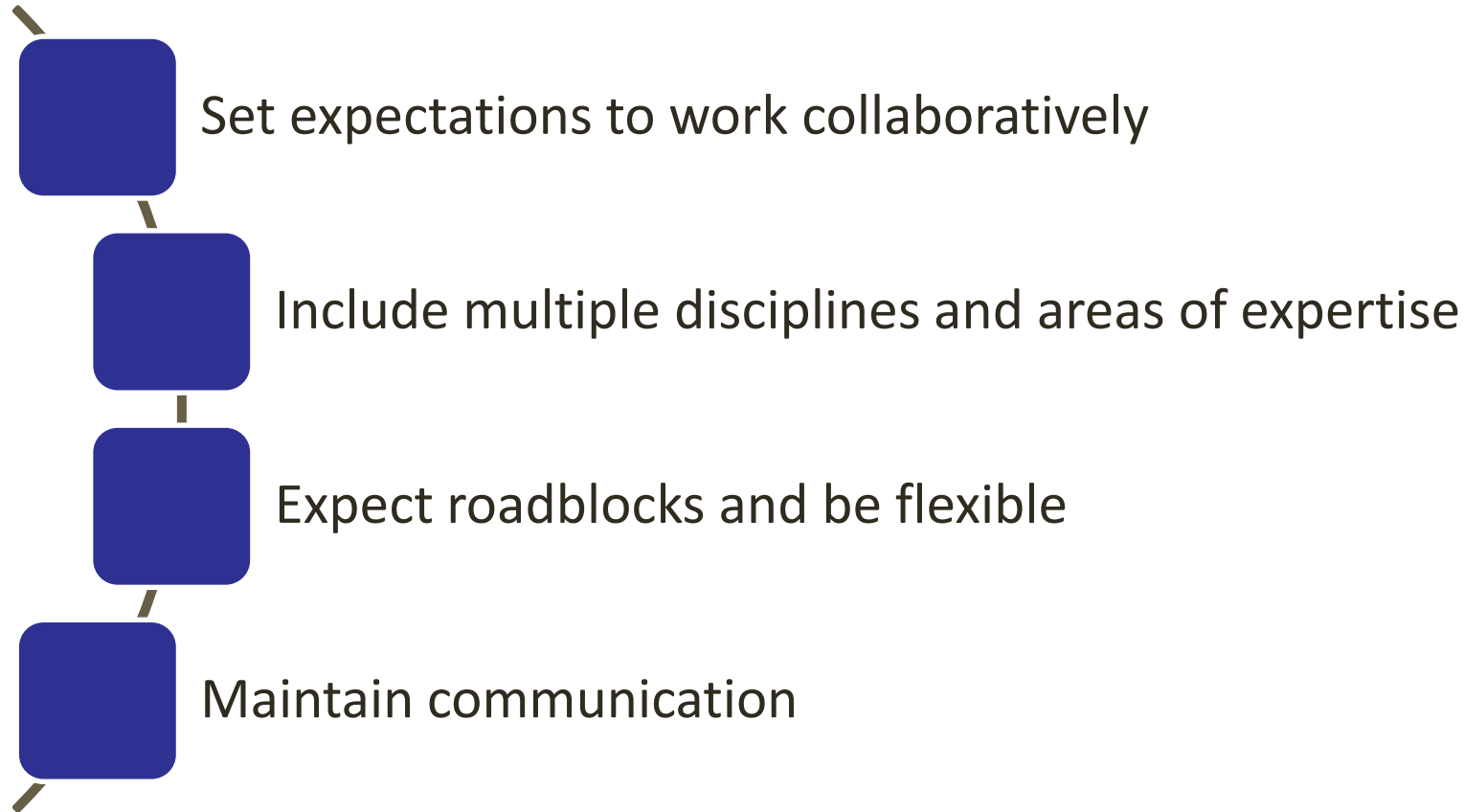
– Bev Green, MD, MPH



Build (or strengthen)  
relationships & nurture  
trusting partnerships



# Build (or strengthen) relationships and nurture trusting partnerships



*“Build relationships with health systems early. It’s like dating, you need to date before you get engaged.”*

– Jerry Jarvik, MD, MPH

*“There can be incredible delay and waste if people don’t trust each other. It’s inevitable there will be challenges even if you assume the best intentions.”*

– Doug Zatzick, MD

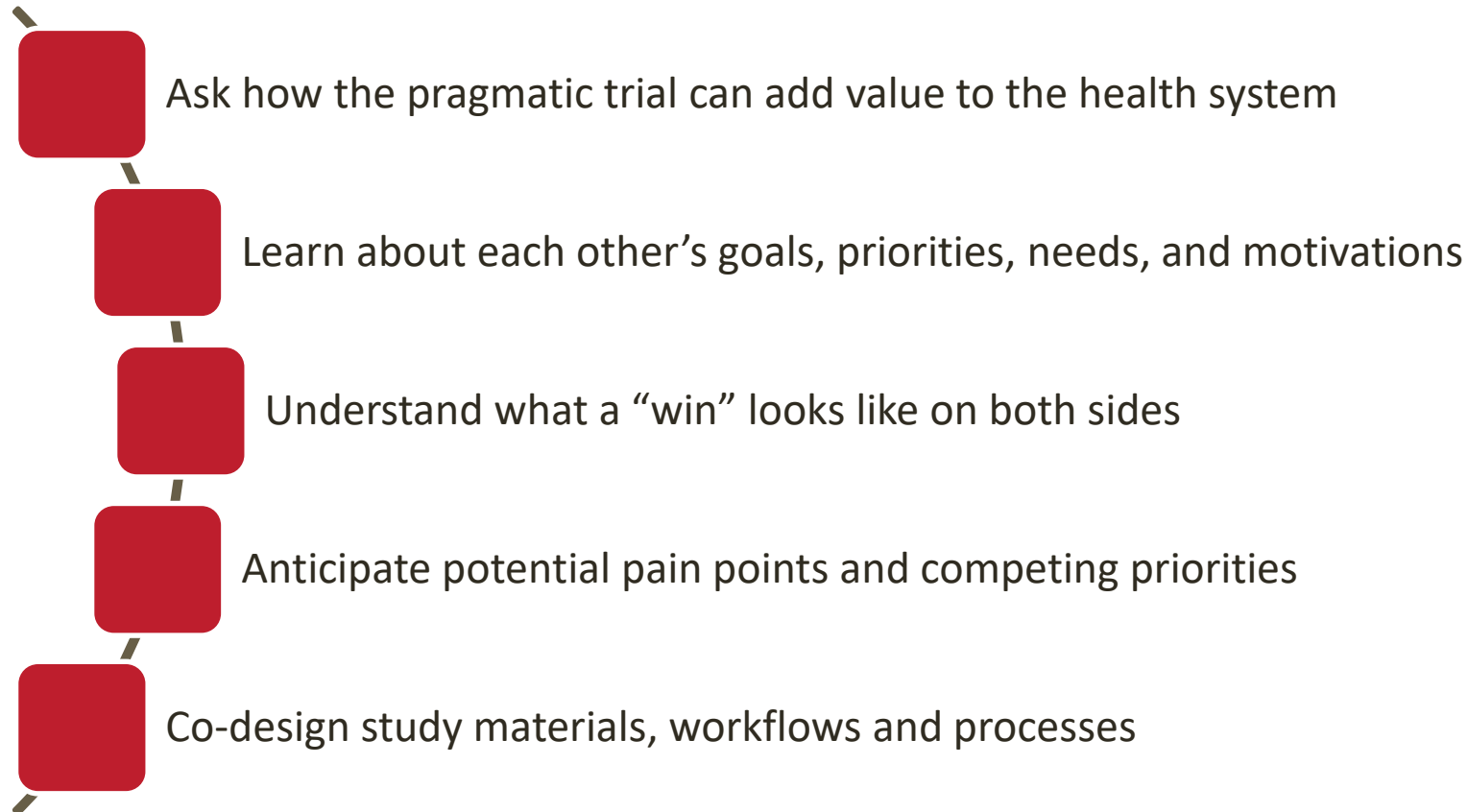




# Collaborate & co-design



# Collaborate and co-design



*"Our trial is guided by Van de Ven's concept of 'engaged scholarship' where knowledge co-created via continuous collaboration with customers and stakeholders."*

– Greg Simon, MD, MPH

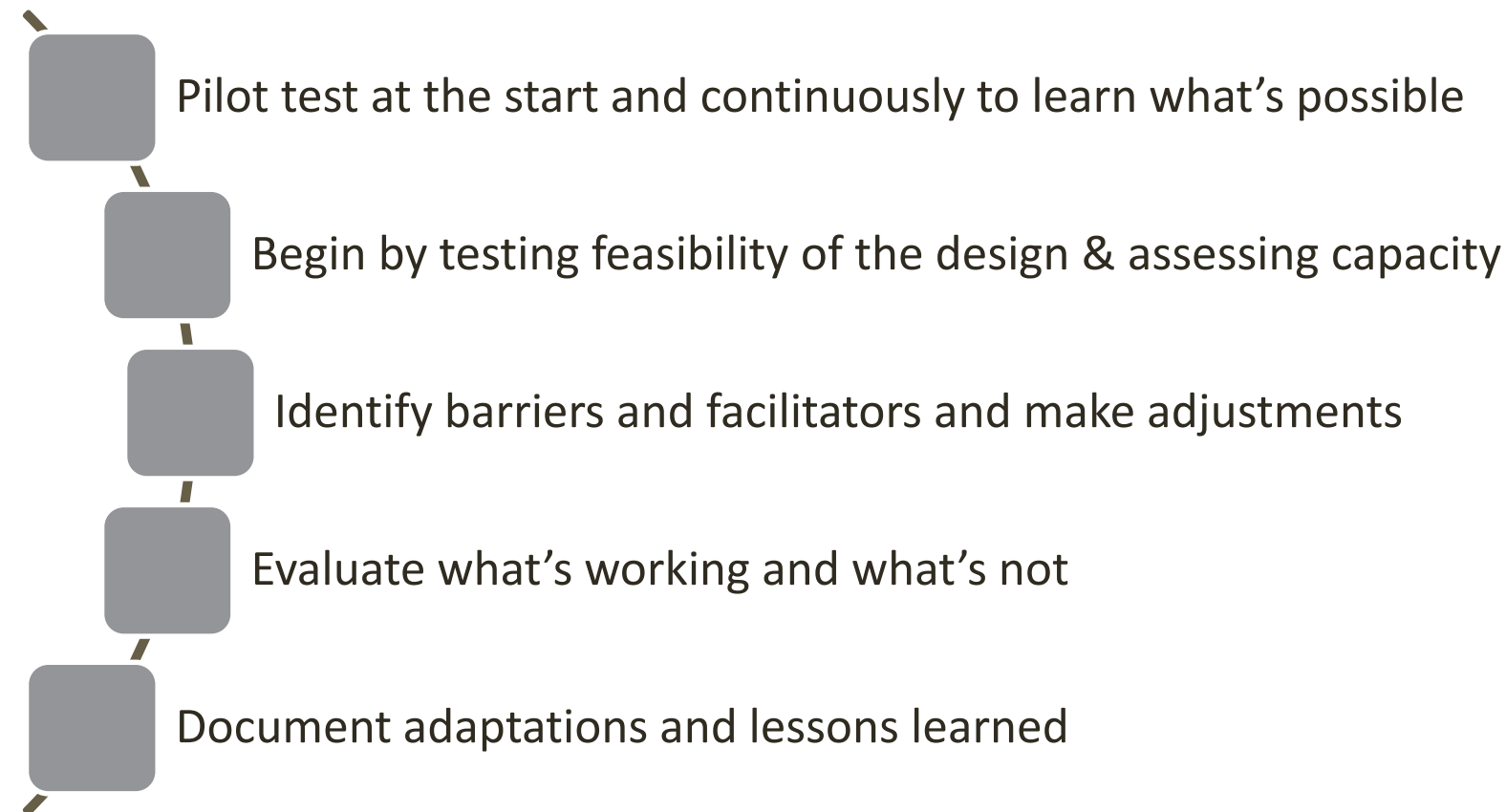
*"Each system is going to implement the trial in a slightly different way that works best for them and their workflows."*

– Miguel Vazquez, MD



Pilot test, evaluate, &  
continuously improve

# Pilot test, evaluate, and continuously improve



*“A pilot study helps set the groundwork for conversations and understanding the context.”*

– Jerry Jarvik, MD, MPH

*“Different from a randomized controlled trial, PCTs use an iterative process and include a lot of refinement.”*

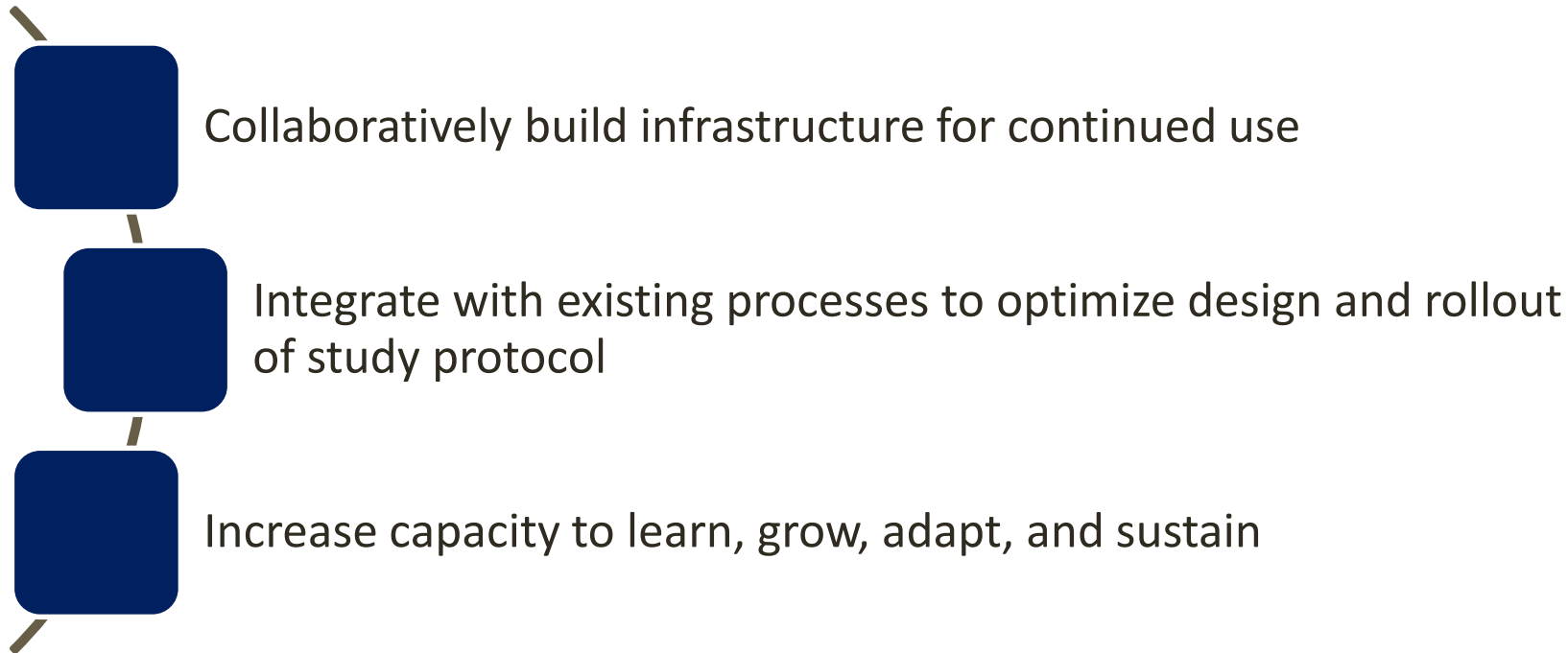
– Lynn DeBar, PhD, MPH



Build sustainable  
infrastructure & resources



# Build sustainable infrastructure and resources



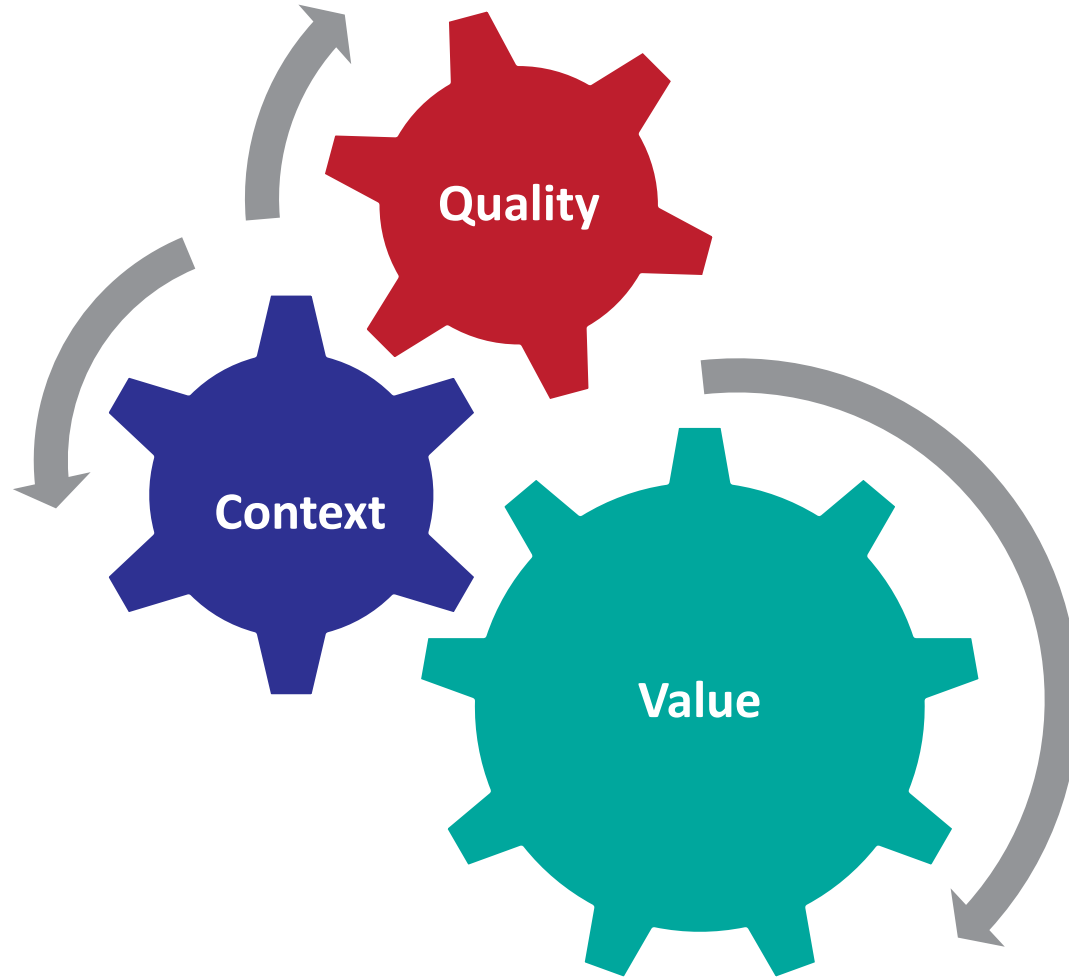
*“The more complicated the intervention is to existing workflow, the more difficult it is to get compliance .”*

– Vincent Mor, PhD

*“Give the clinicians and staff the opportunity to have a positive learning experience with research by giving them the tools they need.”*

– Edward Septimus, MD

# In summary



Plan for dissemination & implementation

Build (or strengthen) relationships & nurture trusting partnerships

Collaborate & co-design

Pilot test, evaluate, & continuously improve

Build sustainable infrastructure & resources

# Thank you!

15 NIH Collaboratory pragmatic clinical trial teams and their health system partners

The NIH Common Fund

The NIH Health Care Systems Research Collaboratory Coordinating Center

For more information, visit <http://rethinkingclinicaltrials.org/>

To contact me, e-mail: [Leah.Tuzzio@kp.org](mailto:Leah.Tuzzio@kp.org)

