



# ICD-Pieces Case Study

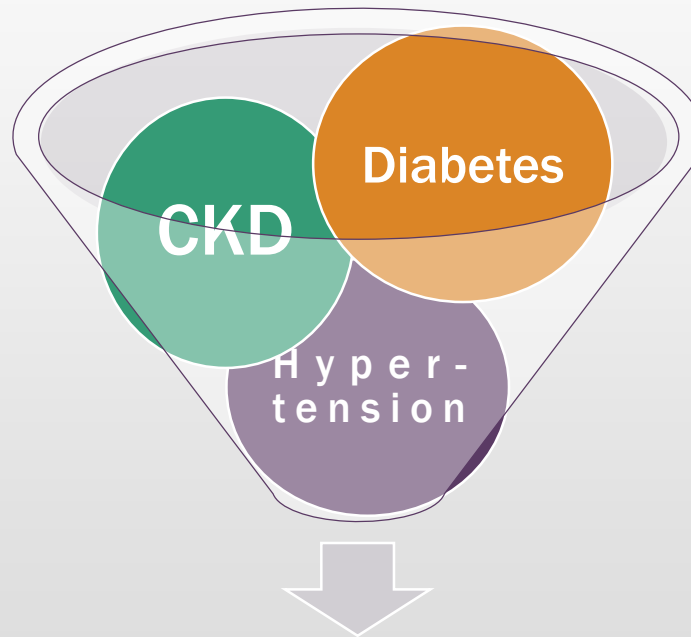
Miguel Vazquez, MD  
University of Texas Southwestern Medical Center

***Essentials of Embedded Pragmatic Clinical Trials***

# Multiple chronic conditions



- >Common
- >Serious Complications



- >Under-recognized
- >Treatable

**Opportunity to  
Advance Care**



# Participating healthcare systems



**UT Southwestern**  
Medical Center



Public Safety Net



Private Nonprofit



Private ACO



U.S. Department  
of Veterans Affairs

Government Hospital

# Study design: cluster randomization





# Potential barriers

- Personnel turnover at multiple sites and levels
- Measuring study fidelity
- Data sharing and transmission



# Lessons learned

## Early Planning



- Align Goals
- Plan together
- Develop trust
- Staffing

## Delivery



- Minimize disruption
- Provide tools
- Adapt
- Create value

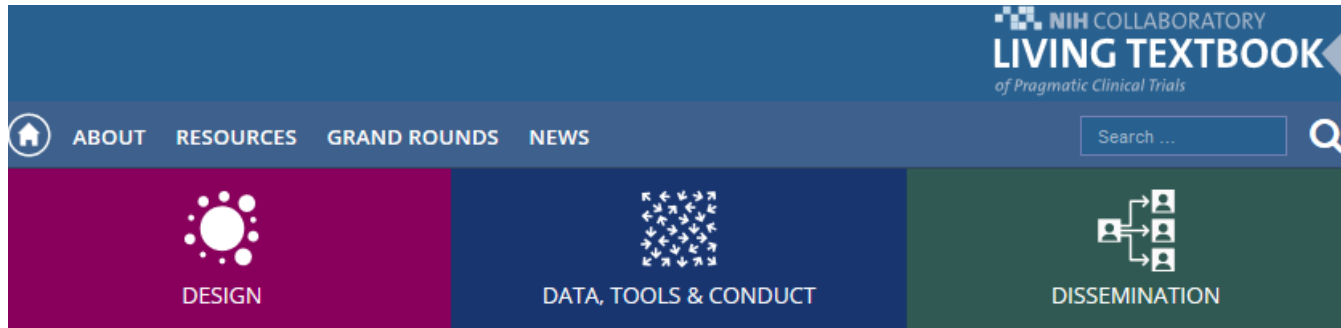
## Completion



- Dissemination / Implementation
- Sustainability
- Future Projects



# Resource: The Living Textbook



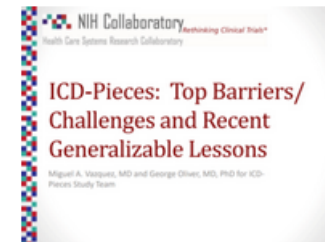
## UH3 Project: Improving Chronic Disease Management with Pieces (ICD-Pieces™)



**Principal Investigator:** [Miguel Vazquez, MD](#)  
**Sponsoring Institution:** University of Texas Southwestern Medical Center  
**Collaborator:** Parkland Health and Hospital System  
**NIH Institute Providing Oversight:** [National Institute of Diabetes and Digestive and Kidney Diseases \(NIDDK\)](#)  
**Program Official:** Susan Mendley (NIDDK)  
**Project Scientist:** Kevin Chan (NIDDK)  
**ClinicalTrials.gov Identifier:** [NCT02587936](#)  
**Study Locations:** [Texas](#), [Connecticut](#)  
**Trial Status:** Currently recruiting participants

[Study Snapshot](#)

## Presentation



5/1/2019: Presentation to NIH Collaboratory Steering Committee ([slides](#))

## Interviews

10/10/2017: Interview with principal investigator Dr. Miguel Vazquez ([PDF](#))

6/4/2015: Interview with principal investigator Dr. Miguel Vazquez ([video](#))

8/20/2014: Interview with principal investigator Dr. Miguel Vazquez ([video](#))

## Supplementary Material

[Regulatory and Ethics Support Documentation](#)