



Top Barriers/Challenges and Recent Generalizable Lessons Learned

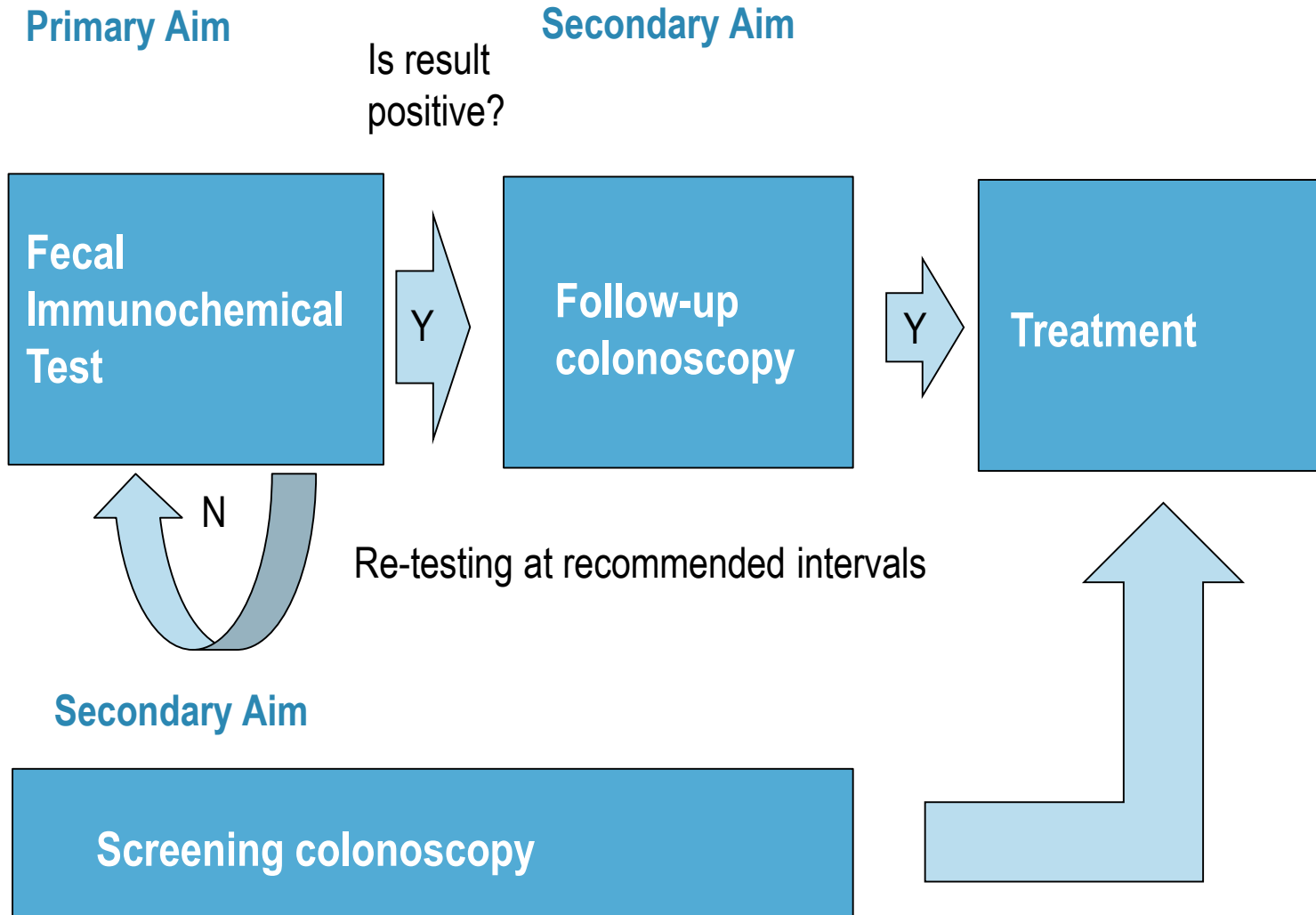
Gloria D. Coronado, PhD; Mitch Greenlick Endowed Investigator in Health Disparities Research
Beverly B. Green, MD, MPH; Kaiser Permanente Washington Research Institute

Barriers Scorecard

Barrier	Level of Difficulty				
	1	2	3	4	5
Enrollment and engagement of patients/subjects	X				
Engagement of clinicians and Health Systems		X			
Data collection and merging datasets		X			
Regulatory issues (IRBs and consent)	X				
Stability of control intervention			X		
Implementing/Delivering Intervention Across Healthcare Organizations			X		

1 = little difficulty 5 = extreme difficulty

The Cancer Care Continuum



Data challenge #1: Colonoscopy capture

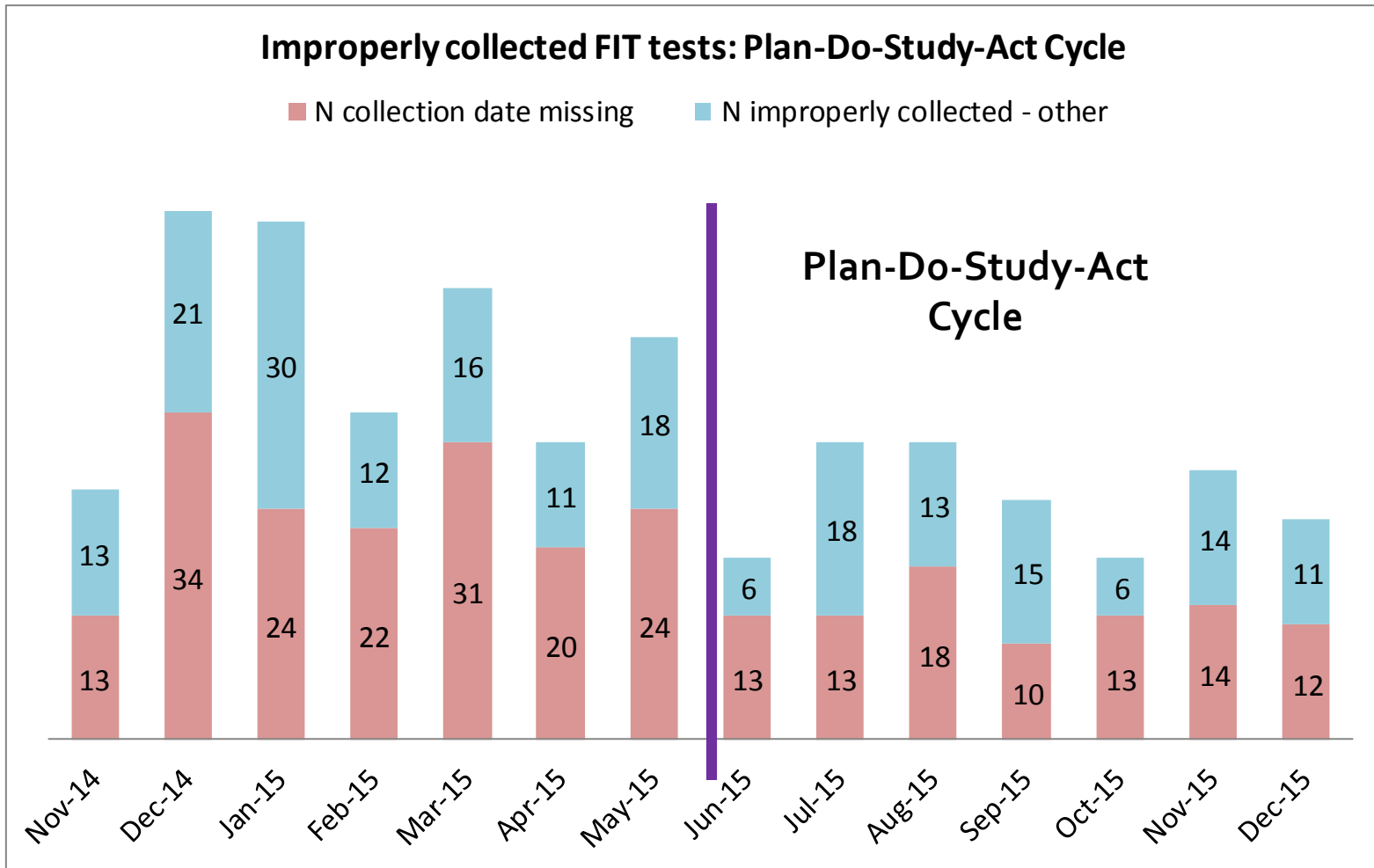
- Colonoscopy is performed in hospitals and ambulatory surgical centers, not primary care
- Colonoscopy data capture is incomplete; no discrete data field; found in problem list, surgical history, etc.
- Study encouraged use of Health Maintenance to track recent colon cancer screening
- Changes in practice patterns has introduced challenge in distinguishing incident and historical colonoscopies – this may impact our secondary outcome ‘any CRC screening’
- **What we are doing?** Abstracting charts of patients who have a positive FIT result (n = 1248 to-date), plus charts of patients with and without colonoscopy.

Data challenge #2: Missing data

- If FIT was mailed by a Medicaid Health Plan, the order and result may not be in the primary care record.

- **What are we doing?** Determining if we can use claims data from some Medicaid Health Plans to cross-reference.

PDSA #2: Improving FIT sample collection



Source: Multnomah County Health Department

Data challenge #4: Denominator problems

- For our secondary outcome – FIT testing in Year 2 – we do not know if a patient in a given clinic who completed a test in Year 1 is an active patient. (Our data are from community clinics; thus, there is no accurate definition of ‘enrolled’.)
- **What are we doing?** Analyzing data in two ways: (1) FIT test completion among all who completed FIT in the past year and (2) FIT test completion among all who completed FIT in the past year and had a clinic visit in the past 12 months.

STOP CRC by the numbers...

- **18+** STOP CRC papers published
- **60+** STOP CRC presentations delivered
- **95** health systems have access to STOP CRC EMR tools (Epic)
- **2** state health departments receive Technical Assistance based on learnings from STOP CRC

Questions?