



Health Care Systems Research Collaboratory

Collaboration Spaces

Asba Tasneem, PhD

Rethinking Clinical Trials



Milestones

- Launched in March 2013
 - 15 members
- Today: Feb 24, 2014
 - Total number of Collaboration Spaces: 18
 - ~300 members

Use Cases of Collaboration Spaces

- Collaboration
- Document Sharing
- Discussion board
- Trackers
- Manuscript writing

Collaboration Spaces (Tour)

<https://flow.dcri.duke.edu/sites/collaboratory/SitePages/Home.aspx>

The screenshot shows the NIH Collaboratory website interface. At the top, there is a navigation bar with 'Site Actions', 'Browse', and 'Page' options. The main header features the NIH Collaboratory logo with the tagline 'Rethinking Clinical Trials™' and 'Health Care Systems Research Collaboratory'. A search bar is located on the right side of the header.

Below the header, there is a main navigation menu with the following items: Collaboratory, Cores, Demonstration Projects, CC Operations, SC Leadership, Bioethics Supplement, CC Ethics Supplement, Collab PMS, and Discussion Board. The current page is identified as 'Collaboratory > Home'.

The main content area is titled 'Welcome to the NIH Collaboratory Collaboration Space'. It contains the following text:

Supported by the Common Fund at the National Institutes of Health, the Collaboratory is intended to improve the way clinical trials are conducted by creating a new infrastructure for collaborative research. The ultimate goal is to ensure that physicians make decisions for their patients that are based on the best available clinical evidence.

Collaboratory collaboration spaces provide a simple and secured solution for storing, organizing, and sharing files and information right from your browser and can be accessed from anywhere. These collaboration spaces are designed for project management and collaboration needs across multiple cores and demonstration projects. Parameters of sharing are controlled based on role, task, type of information, and several other dimensions ensuring that data stays secured and is only shared with the targeted audience. It provides flexibility of sharing data and information with a wide audience or a limited group based on the type of content. Thus far we have created seven collaboration spaces for individual Core groups and a home page for all Collaboratory participants. We have also created a placeholder collaboration space for demonstration projects in anticipation of any requests that we may receive in future.

Below the text is a 'Calendar' section for February 2014. The calendar shows the following events:

Sunday	Monday	Tuesday	Wednesday	Thursday	Friday	Saturday
26	27	28 2:00 pm - 3:00 pm Project Team (Duke)	29	30	31 1:00 pm - 2:00 pm HSC Collaboratory C	1
2	3	4 2:00 pm - 3:00 pm Project Team (Duke)	5	6	7 12:00 pm CC PI/Cor 1:00 pm HSC Collabi	8
9	10	11	12	13	14	15

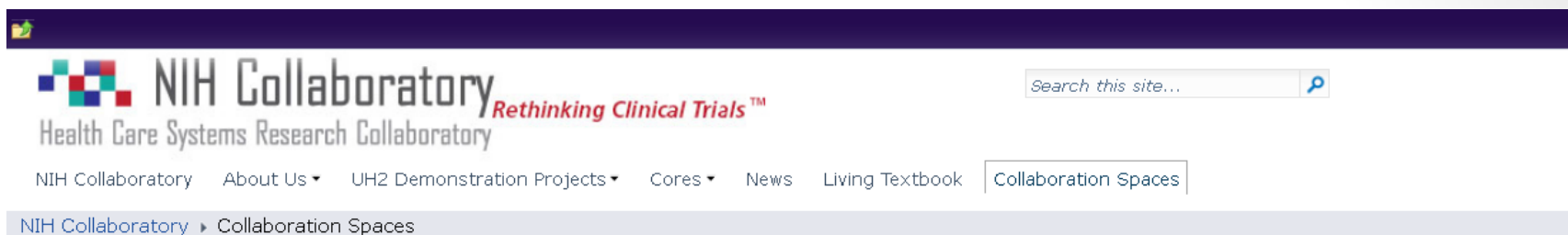
On the right side of the page, there is a blue banner titled 'Collaboration Spaces for Collaboratory'. Below it, there are sections for 'Password Help (for NON-Duke members)', 'Announcements', and 'Links'. The 'Announcements' section includes a table with columns for 'Title' and 'M' (Month).

Title	M
SharePoint Training Modules	12,
Welcome to the new Collaboratory website!	10,

The 'Links' section includes a table with columns for 'URL' and 'No' (Number of links).

URL	No
NIH Home Page	NIH
The HCS Research Collaboratory	Pu
Request access to SP sites	

Launching Collaboration Spaces on Public website

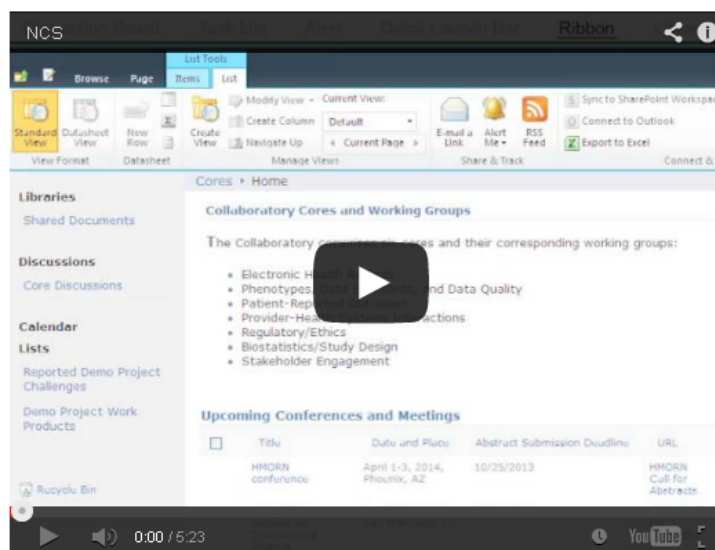


Collaboration Spaces

NIH Collaboratory **collaboration spaces** are available for Collaboratory members and partners. These collaboration spaces provide a secure location for storing, organizing, and sharing files and information via a web browser, accessible from anywhere. Collaboration spaces are designed for project management and collaboration activities across multiple cores and demonstration projects.

Access to information is controlled by role, task, and type of information to ensure that data is secure and is shared with the targeted audience.

Take a short tour of our Collaboration spaces via this video below.



Collaboration Spaces: Pocket Cards

- Quick tips on using Collaboration Spaces
 - Access to Collaboration Spaces
(<https://flow.dcri.duke.edu/sites/collaboratory>)
 - Resetting password
(<https://flow.dcri.duke.edu/SiteAssets/passwordchange.aspx>)
 - How to set an alert
- Quick Demo: Collaboration space booth