



VA Quality Enhancement Research Initiative  
EVIDENCE INTO PRACTICE



MICHIGAN MEDICINE  
UNIVERSITY OF MICHIGAN

# Pragmatic Implementation Trials: Generating the Right Evidence to Support Decisionmakers

**Amy M. Kilbourne, PhD, MPH**

Director, Quality Enhancement Research Initiative  
U.S. Department of Veterans Affairs  
Professor of Learning Health Sciences  
University of Michigan



MEDICAL SCHOOL  
DEPARTMENT OF LEARNING HEALTH SCIENCES  
UNIVERSITY OF MICHIGAN



U.S. Department of Veterans Affairs

Veterans Health Administration  
Office of Research & Development

# Overcoming Barriers to Getting the Right Evidence to Decisionmakers

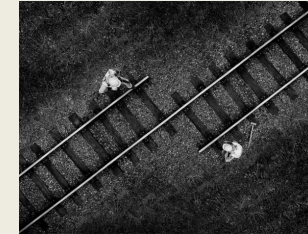
## Research timelines vs. community needs

- First submission to publication ~6 years at least
- Decisions are made without waiting for research



## Mismatched priorities and incentives

- Leaders want specific and timely answers
- Lack of incentives for community engagement



## Lack of planning for future scale-up of interventions

- What is the value proposition? Will providers adopt?
- Avoiding “helicopter research”



Ref: David Atkins, MD, MPH

# Example: Multisite Implementation Trial of Evidence-based Brief Care Management for Veterans with SMI (Re-Engage)

- 2011: VHA leadership endorses national policy to implement Re-Engage to identify, coordinate care for at-risk Veterans with serious mental illness
- 2011: VHA Office of Mental Health (OMH) endorses national pragmatic trial to inform optimal change strategy to enhance provider uptake of Re-Engage



Jeff Burk, PhD, Dave Carroll, PhD, national sponsors

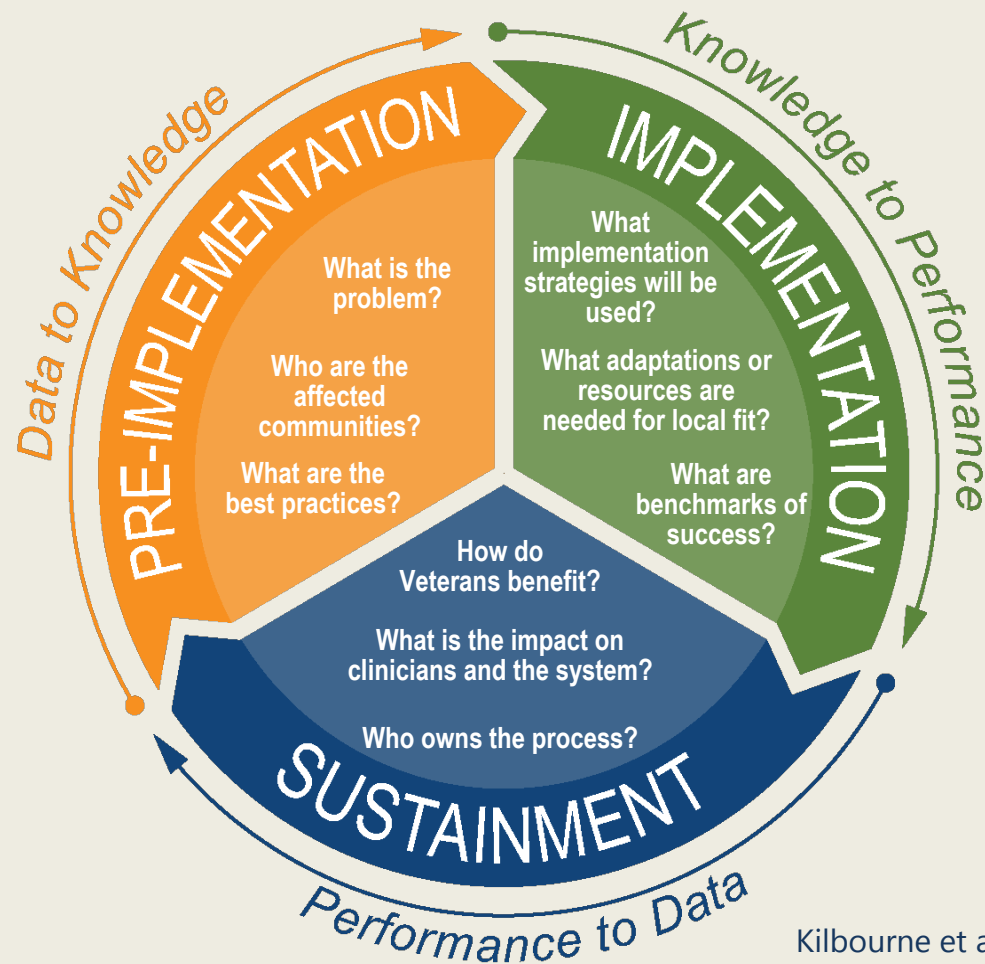
VHA national network of Mental Health Recovery Coordinators

5-site pilot launch led by practitioners funded by OMH

- 2012-13 VA Research-funded 158-site national implementation study showing facilitation strategy improved Re-Engage uptake vs. training/monitoring
- 2013 - Re-Engage program added to national VHA performance measure  
VHA OMH provides ongoing Re-Engage facilitation

Funding: VHA SDR 11-232; Refs: Kilbourne et al. 2013 (Imp Sci), 2014 (Psychiatr Serv), 2015 (APMH)

# Tools of the Trade: QUERI Roadmap



- Learning community to identify mutual problem of interest
- Involve frontline providers, managers
- Cultivate sites, data governance
- Broadly identify effective practices
- Anticipate barriers → change strategies
- Adaptive designs that pre-specify “stepped-up” change strategies
- Ascertain (EHR-based) primary and intermediate outcomes (CONSORT)
- Develop sustainment plan for end-users to replicate

Kilbourne et al 2019, Goodrich et al 2020; Giese et al 2018, Friedman 2022