



PRAGMATIC CLINICAL TRIALS: THE ROLE OF NURSING SCIENCE

A PRESENTATION TO
THE NIH PRAGMATIC TRIALS COLLABORATORY

Shannon N. Zenk, PhD, MPH, RN
Director, NINR

Overview

- Nursing Research Overview
- NINR's Strategic Plan
- Pressing Health Challenges
- The Role of Nursing and Nursing Science
in PCTs
- Discussion



National Institute of Nursing Research






NATIONAL INSTITUTE OF NURSING RESEARCH



2022-2026 STRATEGIC PLAN



“NINR Mission: Leading nursing science to solve pressing health challenges and inform practice and policy – optimizing health and advancing health equity into the future.”

All NINR-Supported Research:

- Tackles today's pressing health challenges and stimulates discoveries to prepare for, prevent, or address tomorrow's challenges
- Discovers solutions across clinical, community, and policy settings to optimize health for individuals, families, communities, and populations
- Advances equity by removing structural barriers from research, cultivating diversity in perspectives and ideas, and fostering inclusion and accessibility in designing, conducting, and participating in research
- Is innovative, develops or applies the most rigorous methods, and has the potential for the greatest impact on health

Research Lenses – Examining Health



Health Equity



**Social
Determinants of
Health**



**Population and
Community Health**



**Prevention and
Health Promotion**



**Systems and
Models of Care**

Health Equity

Reduce and eliminate the systemic and structural inequities that place some at an unfair, unjust, and avoidable disadvantage in attaining their full health potential.



Social Determinants of Health

Identify effective approaches to improve health and quality of life by addressing the conditions in which people are born, live, learn, work, play, and age.



Population and Community Health

Address critical health challenges at a macro level that persistently affect groups of people with shared characteristics.



Prevention and Health Promotion

Prevent disease and promote health through the continuum of prevention—from primordial to tertiary.



Systems and Models of Care

Address clinical, organizational, and policy challenges through new systems and models of care.



Nursing Research Through NINR's Research Lenses



Area of Interest*	Percent of Budget	NIH Rank as a Percent of Budget
Clinical Research	78%	1st
Behavioral and Social Sciences Research	60%	2nd
Prevention	43%	3rd
Health Disparities	34%	2nd
Social Determinants of Health	26%	3rd
Training**	22%	2nd
Women's Health	20%	4th

* Funding categories are not mutually exclusive

** National Research Service Awards (Fs/Ts)

ABOUT NINR

Who We Are

What We Do

Strategic Plan

Connect With Us

Visitor Information

Jobs at NINR

The National Institute of Nursing Research 2022–2026 Strategic Plan

 PRINT  SHARE 

Introduction

Director’s Overview

Scientific Strategy

Stewardship

Development Process

FAQs

The National Institute of Nursing Research 2022–2026 Strategic Plan outlines the Institute’s vision for supporting science that advances our mission: to lead nursing research to solve pressing health challenges and inform practice and policy—optimizing health and advancing health equity into the future.

Nurses are crucial to solving the Nation’s most pressing and persistent health challenges. As both the largest health profession and the largest of all professions in the Nation, nurses are the backbone of our health systems in the United States and have ranked as the most trusted profession for 20 years in a row. Nurses interact with individuals and families more closely than other health professionals in the many clinical, community, and policy settings in which they work; thus, they have a deep understanding of the

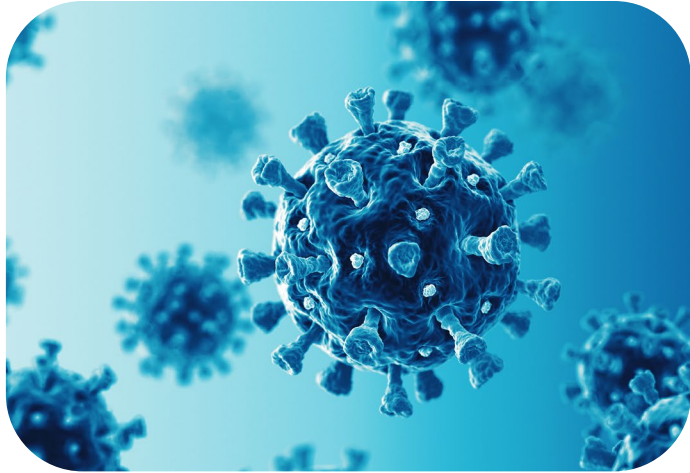


NINR.NIH.gov

A high-angle, top-down photograph of a diverse group of people standing in a circle on a wooden floor. They are all reaching their hands towards the center, where they are stacked on top of each other. The people are wearing various casual and business-casual clothing, including denim shirts, patterned blouses, and light-colored shirts. The lighting is soft and even, highlighting the texture of the wood and the variety of colors in their clothing. The overall mood is one of collaboration and shared purpose.

We need
solutions now

Examples of Pressing Health Challenges



2x

People who are **Hispanic, Black, and American Indian or Alaska Native** are **nearly twice as likely to die from COVID-19** as people who are White.



1 in 5

1 in 5 adults in the United States report **experience with discrimination** in the health care system.

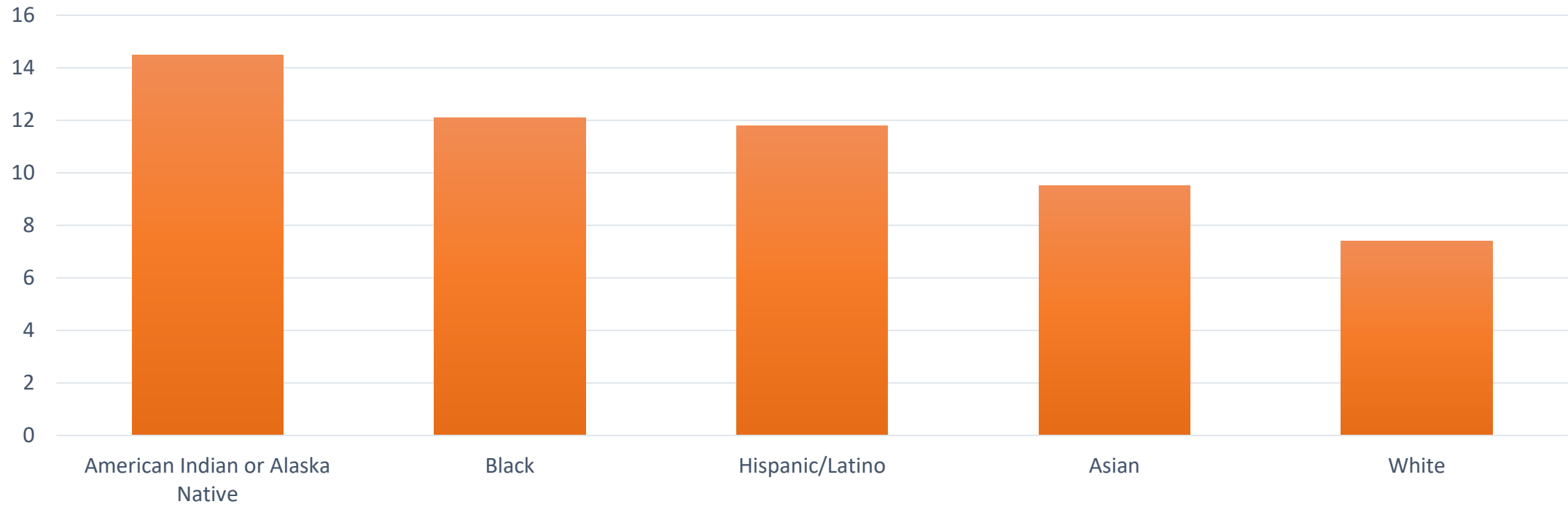


22%

Black individuals are 22% less likely than White individuals to **receive any pain medication** for similar painful conditions.

Examples of Pressing Health Challenges

Percentage of U.S. Adults 18 or Older With Diagnosed Diabetes, by Race and Ethnicity, 2018–2019

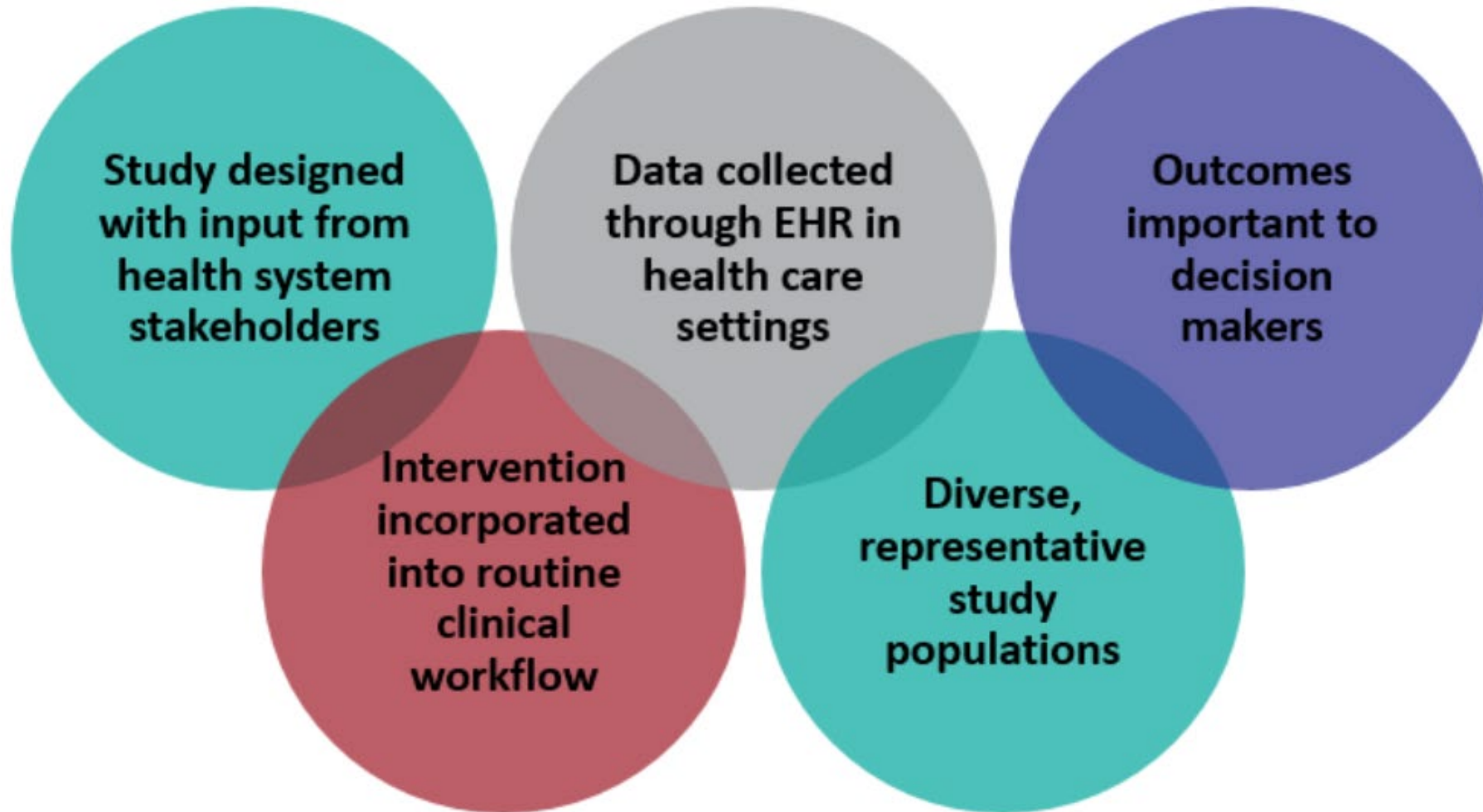


Common-Sense PCT Definition

Designed for the primary purpose of informing decision-makers regarding the comparative balance of benefits, burdens, and risks of a biomedical or behavioral health intervention at the individual or population level.

Califf and Sugarman, 2015. From rethinkingclinicaltrials.org/chapters/pragmatic-clinical-trial/what-is-a-pragmatic-clinical-trial-2

Embedded Pragmatic Clinical Trials



From: rethinkingclinicaltrials.org/chapters/pragmatic-clinical-trial/what-is-a-pragmatic-clinical-trial-2

NINR Participation in the Collaboratory

- **UG3NR019943**: Nonpharmacologic Pain Management in Federally Qualified Health Centers Primary Care Clinics (BeatPain Utah). Program Official: **Karen Kehl, NINR**
- **UG3AG060626**: Advance Care Planning: Promoting Effective and Aligned Communication in the Elderly (ACP PEACE). Project Scientist: **Lynn Adams, NINR**
- **UG3AR076387**: Fibromyalgia TENS in Physical Therapy Study (FM-TIPS). Project Scientist: **Lynn Adams, NINR**
- **UH3AG049619**: Pragmatic Trial of Video Education in Nursing Homes (PROVEN). Project Scientist: **Jeri Miller, NINR (retired)**



The National Academies of
SCIENCES • ENGINEERING • MEDICINE

CONSENSUS STUDY REPORT

The Future of Nursing 2020–2030

Charting a Path
to Achieve Health Equity



NATIONAL ACADEMY OF MEDICINE



NATIONAL ACADEMY of MEDICINE



Robert Wood Johnson Foundation

Community Engagement





National Institute of Nursing Research

NINR.NIH.gov

Email us: **info@ninr.nih.gov**

Twitter: **@NINR**

LinkedIn: **National Institute of
Nursing Research**