

A d a p t i n g a n u r s e C a r e M a n a g e m e n t M o d e l t o C a r e f o r R u r a l P a t i e n t s w i t h Ch r o n i c P a i n ( A I M - C P ) :  
*Lessons and Challenges Engaging Rural Populations*

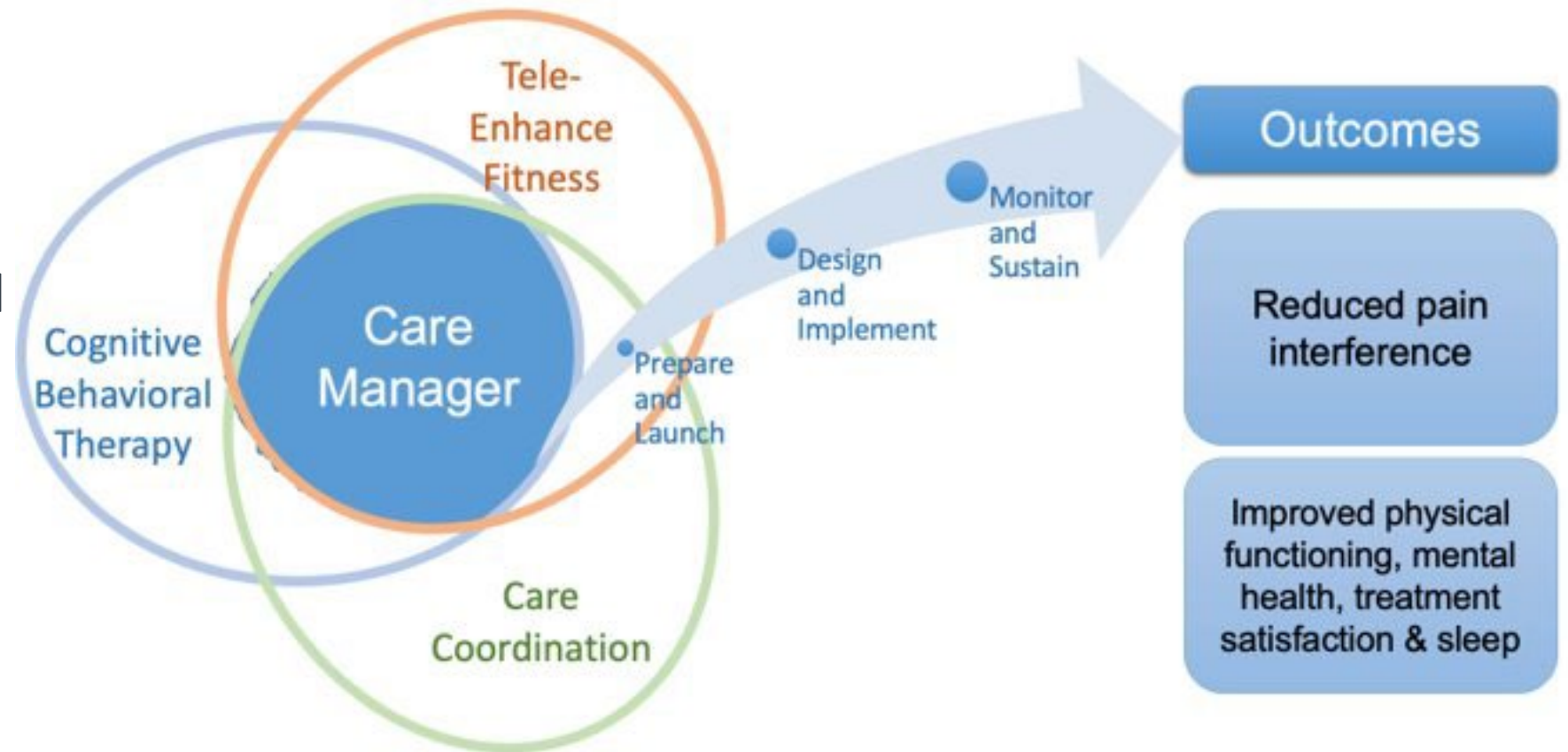


Co-PIs: Sebastian Tong, MD, MPH; Kushang Patel, PhD, MPH

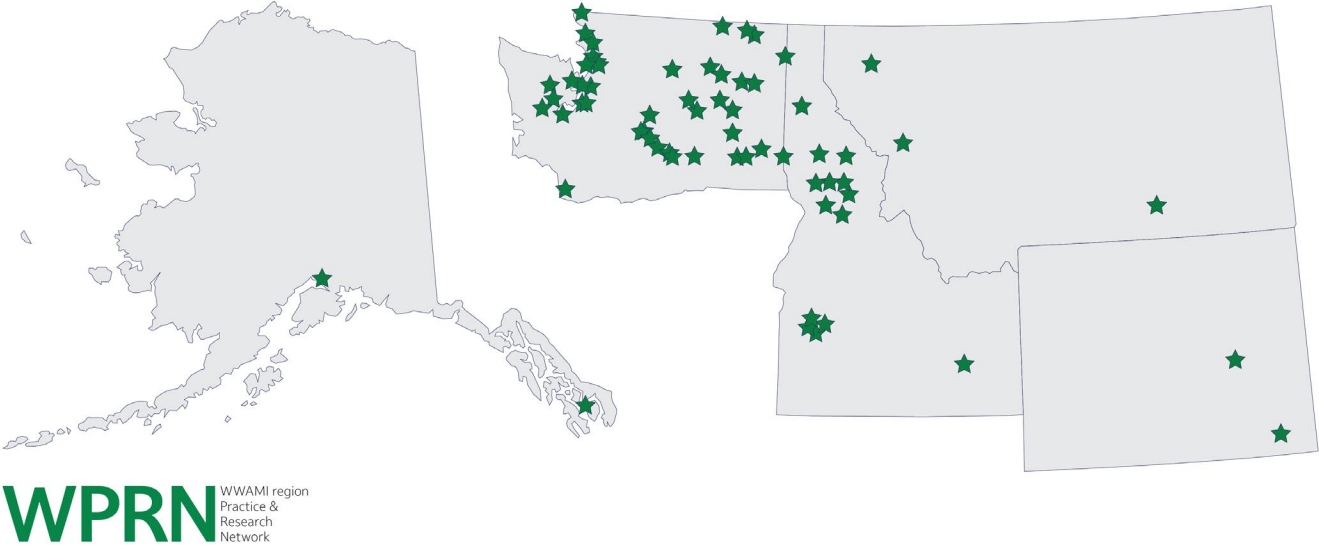
July 15, 2024

# Care Management Model

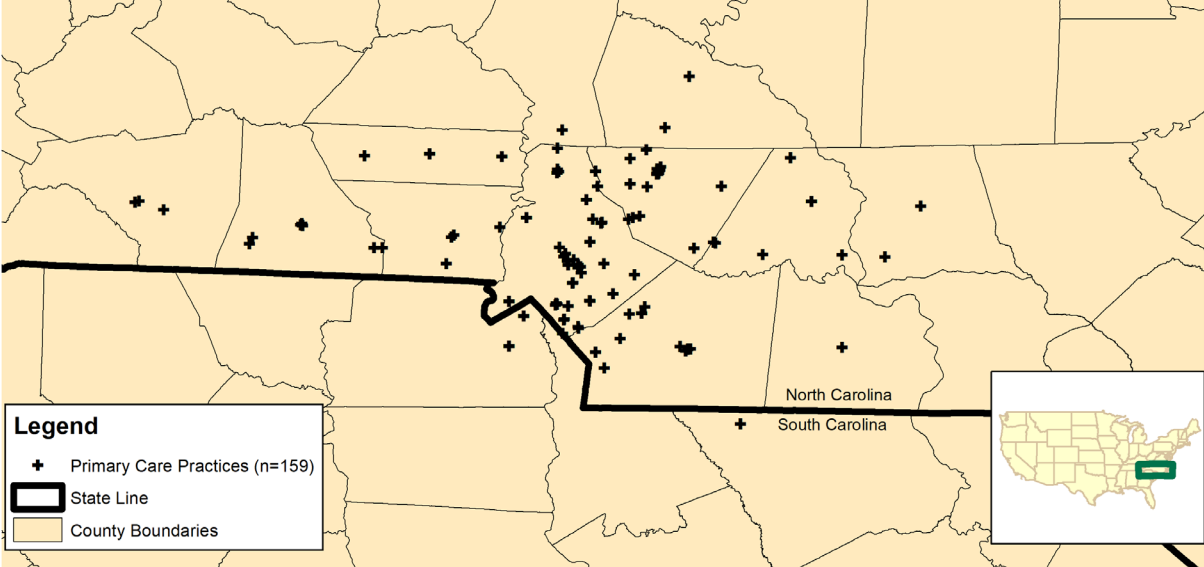
1. Care Coordination
2. Cognitive Behavioral Therapy
3. Remotely delivered *Enhance Fitness* exercise program



# Engagement Settings



Primary Care Practice Locations for the Mecklenburg Area for Partnership for Primary Care Research (MAPPR)



# Practice Engagement Modalities

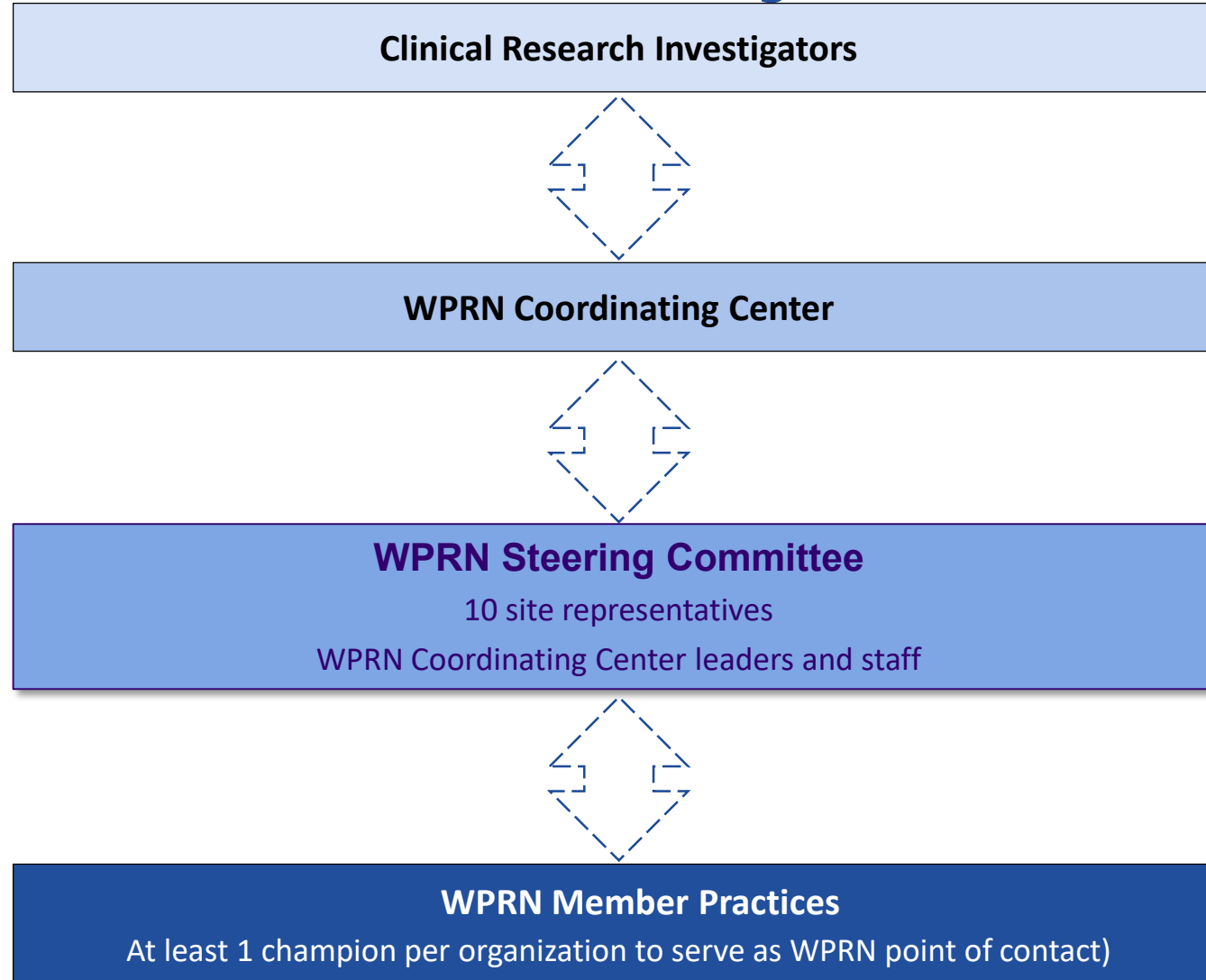
1. Practice-Based Steering Committee
2. Practice-Based Research Network Annual Conference
3. Partner Panel for Research

# WPRN Steering Committee

- 1-hour monthly Zoom meetings
- Guide research priorities, approve/provide feedback on all WPRN studies
- Committee includes: BH providers, pharmacists, primary care clinicians, residency leadership, health system leadership



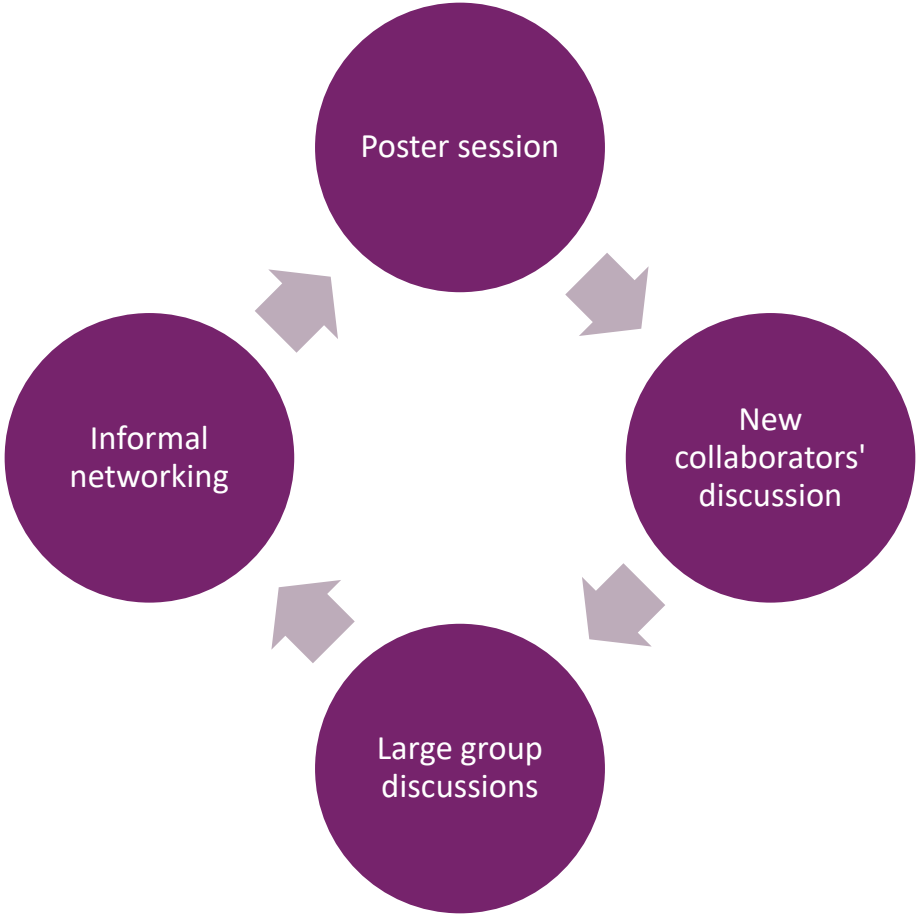
# WPRN Project



# Annual Meeting



# Engagement opportunities at annual meeting



# WPRN's Partner Panel for Research (PPR)

- A group of clinicians from WPRN practices who agree to receive up to 5 surveys and/or qualitative interview requests per year
- Designed to help investigators get perspectives of individuals working in primary care practices

# Our study's engagement

- 1 survey and 1 qualitative study through Partner Panel for Research
- Discussion with WPRN Steering Committee
- Annual Conference
  - Poster presentation (feedback, adaptation and recruitment)
  - Network research priorities

# Thank you!



Sebastian Tong, MD, MPH  
Kushang Patel, PhD, MPH

setong@uw.edu  
kvpatel@uw.edu