

Retrofitting, Re-imagining, and Re-designing Health Care Systems to Reach Populations Most Affected by Health Inequities

Moderator:

Rosa Gonzalez-Guarda, PhD, MPH, RN, CPH, FAAN

Duke University School of Nursing



**NIH PRAGMATIC TRIALS
COLLABORATORY**

Rethinking Clinical Trials®

Session Participants

- **Diana Burgess, PhD**
Co-PI: RAMP
University of Minnesota
Minneapolis VA Health Care System
Research Service
- **Gloria D. Coronado, PhD**
Co-PI: STOP CRC
University of Arizona Cancer Center
- **Eduard Vasilevskis, MD, MPH**
Co-PI: BEST-ICU
University of Wisconsin School of
Medicine and Public Health

Inspiration for this session



Design by Emily Schwartz; from Tupriano, A. (April 2, 2023). [Bathroom lines: A subtle day-to-day reminder of gender inequality.](#) *The Michigan Daily.*

Inspiration for this session (Generated by Copilot, 7/12/24)



Session Goal

- Discuss what can be accomplished at the design phase to ensure that populations most affected by health inequities in the condition being addressed are included in research
- Examine how to ensure healthcare systems in both resource rich and underserved settings are research ready to engage historically marginalized populations

How can we retrofit, redesign, or reimagine health systems we partner with for pragmatic clinical trials to make them more equitable and beneficial for all?

Table 1. Merriam-Webster definitions for retrofit, reform, and reimagine

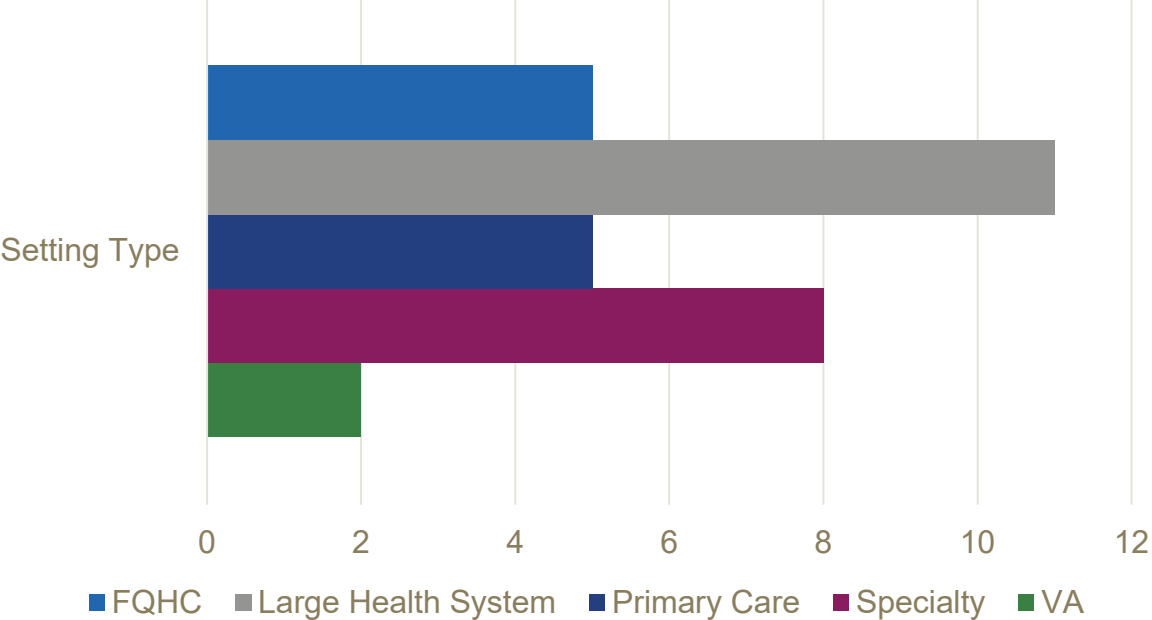
Retrofit—transitive verb	Reform—transitive verb	Reimagine
<p>1: To furnish (something, such as a computer, airplane, or building) with new or modified parts or equipment not available or considered necessary at the time of manufacture</p> <p>2: To install (new or modified parts or equipment) in something previously manufactured or constructed</p> <p>3: To adapt to a new purpose or need: MODIFY (retrofit the story for a new audience)</p>	<p>1a: To put or change into an improved form or condition</p> <p>1b: To amend or improve by change of form or removal of faults or abuses</p> <p>2: To put an end to (an evil) by enforcing or introducing a better method or course of action</p> <p>3: To induce or cause to abandon evil ways (ie, reform a drunkard)</p> <p>4a: to subject (hydrocarbons) to cracking</p> <p>4b: to produce (gasoline, gas, etc) by cracking</p>	<p>1: To imagine again or anew especially: to form a new conception of: RE-CREATE</p>

McLemure, M. (2022). Using Retrofit, Reform, and Reimagine to Advance Toward Health Equity. *The Journal of Perinatal and Neonatal Nursing*, 36 (2), 99–102. DOI: 10.1097/JPN.0000000000000639

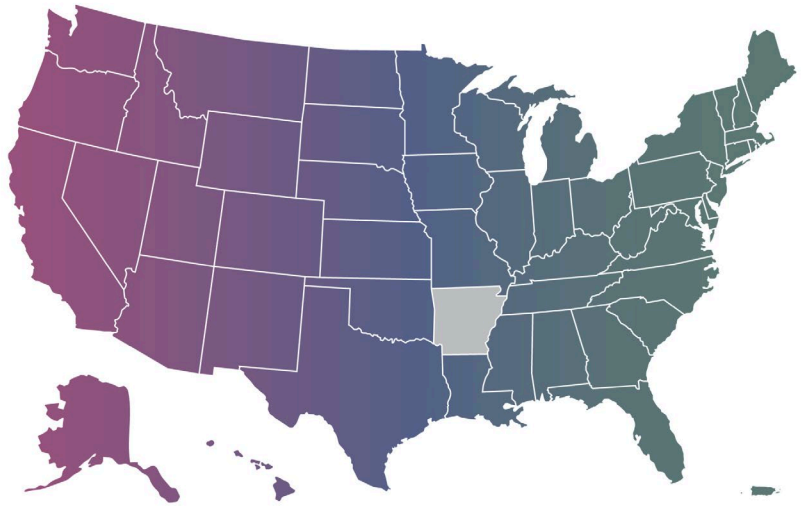


NIH Collaboratory Trial Settings

NIH Collaboratory Trial Settings

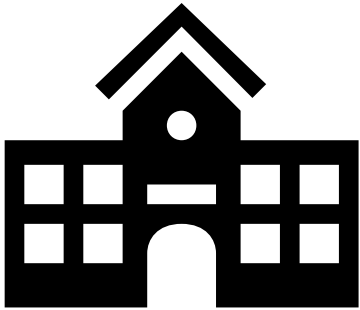


49
U.S. states
and Puerto Rico
are included in
our clinical
trials >1,100
clinical sites



32 Active/Completed Trials

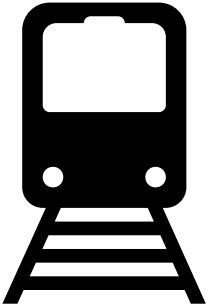
Systems to Engage With



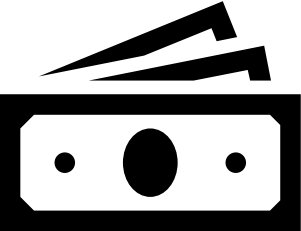
Schools



Community Partners



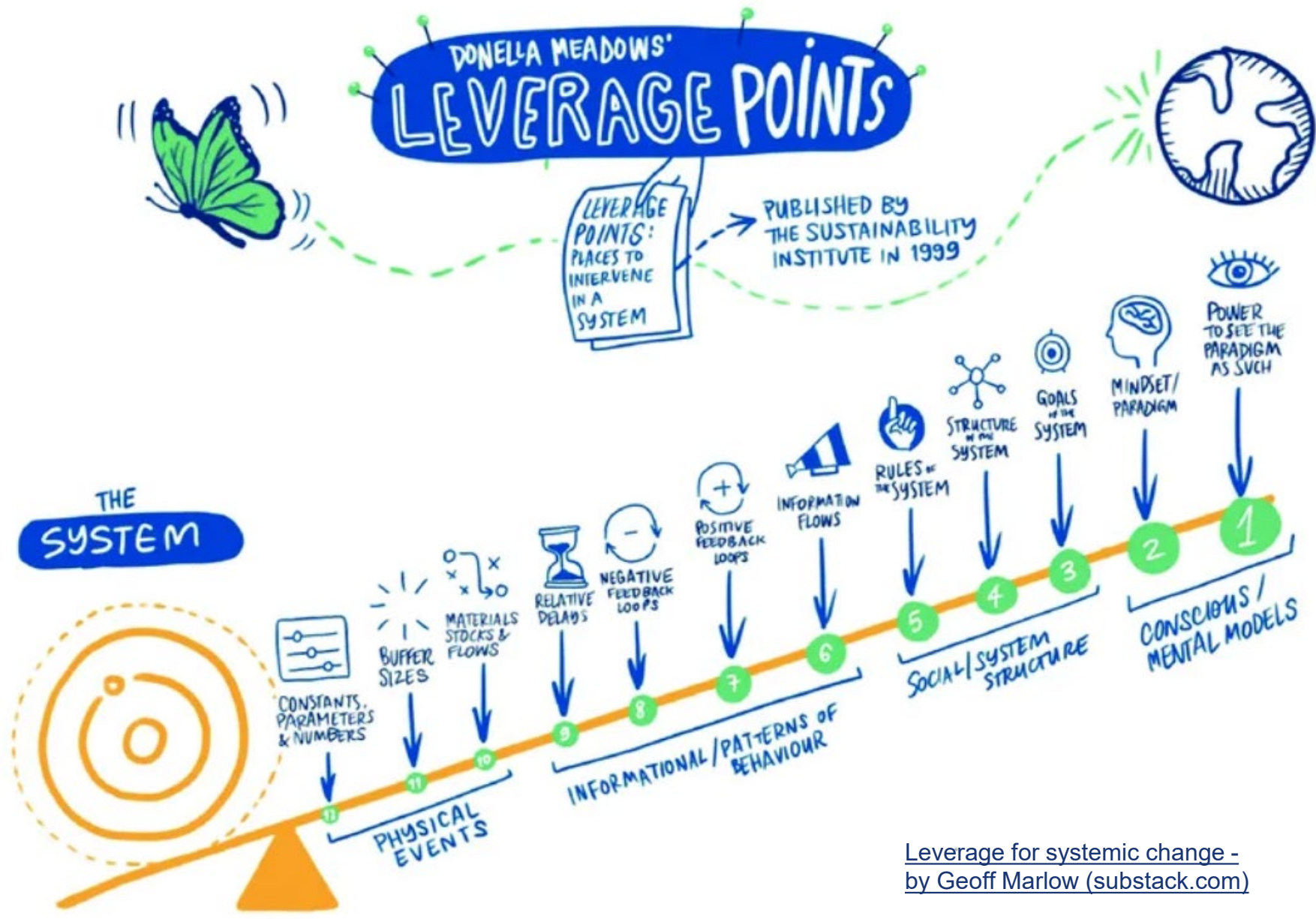
Transportation



Payors



Government



Leverage for systemic change - by Geoff Marlow (substack.com)

Image credit UNDP UNDP/Carlotta Cataldi